

ABflo® 647 Rabbit anti-Human TIM-3/HAVCR2 mAb

Catalog No.: A22489

Basic Information

Observed MW

Refer to figures

Calculated MW

33kDa

Category

Primary antibody

Applications

FC

Cross-Reactivity

Human

CloneNo number

ARC54204-ABf647

Conjugate

ABflo® 647. Ex:648nm. Em:664nm.

Recommended Dilutions

FC 5 µl per 10⁶ cells in
100 µl volume

Background

The protein encoded by this gene belongs to the immunoglobulin superfamily, and TIM family of proteins. CD4-positive T helper lymphocytes can be divided into types 1 (Th1) and 2 (Th2) on the basis of their cytokine secretion patterns. Th1 cells are involved in cell-mediated immunity to intracellular pathogens and delayed-type hypersensitivity reactions, whereas, Th2 cells are involved in the control of extracellular helminthic infections and the promotion of atopic and allergic diseases. This protein is a Th1-specific cell surface protein that regulates macrophage activation, and inhibits Th1-mediated auto- and alloimmune responses, and promotes immunological tolerance.

Immunogen Information

Gene ID

84868

Swiss Prot

Q8TDQ0

Immunogen

Recombinant fusion protein containing a sequence corresponding to amino acids 22-200 of human TIM-3/HAVCR2 (NP_116171.3).

Synonyms

TIM3; CD366; KIM-3; SPTCL; TIMD3; Tim-3; TIMD-3; HAVcr-2

Contact

☎ | 400-999-6126

✉ | cn.market@abclonal.com.cn

🌐 | www.abclonal.com.cn

Product Information

Source

Rabbit

Isotype

IgG

Purification

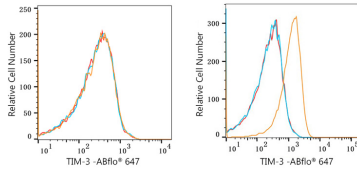
Affinity purification

Storage

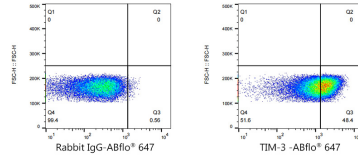
Store at 2-8°C. Avoid freeze.

Buffer: PBS with 0.03% proclin300,0.2% BSA,pH7.3.

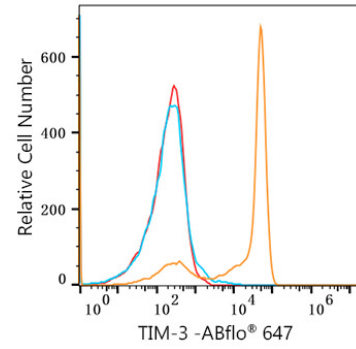
Validation Data



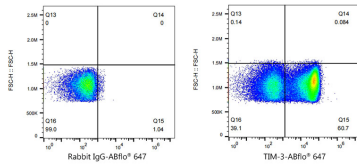
Flow cytometry: 1×10^6 MCF7 cells (negative control, left) and Daudi cells (right) were surface-stained with ABflo® 647 Rabbit anti-Human TIM-3/HAVCR2 mAb (A22489, 5 μ l/Test, orange line) or ABflo® 647 Rabbit IgG isotype control (A22070, 5 μ l/Test, blue line). Non-fluorescently stained cells was used as blank control (red line).



Flow cytometry: 1×10^6 Daudi cells were surface-stained with ABflo® 647 Rabbit IgG isotype control (A22070, 5 μ l/Test, left) or ABflo® 647 Rabbit anti-Human TIM-3/HAVCR2 mAb (A22489, 5 μ l/Test, right).



Flow cytometry: 1×10^6 Human PBMC were surface-stained with ABflo® 647 Rabbit anti-Human TIM-3/HAVCR2 mAb (A22489, 5 μ l/Test, orange line) or ABflo® 647 Rabbit IgG isotype control (A22070, 5 μ l/Test, blue line). Non-fluorescently stained Human PBMC was used as blank control (red line).



Flow cytometry: 1×10^6 Human PBMC cells were surface-stained with ABflo® 647 Rabbit IgG isotype control (A22070, 5 μ l/Test, left) or ABflo® 647 Rabbit anti-Human TIM-3/HAVCR2 mAb (A22489, 5 μ l/Test, right).