

ABflo® 647 Rabbit anti-Human CD318/CDCP1 mAb

Catalog No.: A22499

Basic Information

Observed MW

Calculated MW

37kDa/72kDa/92kDa

Category

Primary antibody

Applications

FC

Cross-Reactivity

Human

CloneNo number

ARC55519

Conjugate

ABflo® 647. Ex:648nm. Em:664nm.

Background

This gene encodes a transmembrane protein which contains three extracellular CUB domains and acts as a substrate for Src family kinases. The protein plays a role in the tyrosine phosphorylation-dependent regulation of cellular events that are involved in tumor invasion and metastasis. Alternative splicing results in multiple transcript variants of this gene.

Recommended Dilutions

FC 5 µl per 10⁶ cells in
100 µl volume

Immunogen Information

Gene ID

64866

Swiss Prot

Q9H5V8

Immunogen

Recombinant protein (or fragment). This information is considered to be commercially sensitive.

Synonyms

CD318; TRASK; SIMA135

Contact

☎ | 400-999-6126

✉ | cn.market@abclonal.com.cn

🌐 | www.abclonal.com.cn

Product Information

Source

Rabbit

Isotype

IgG

Purification

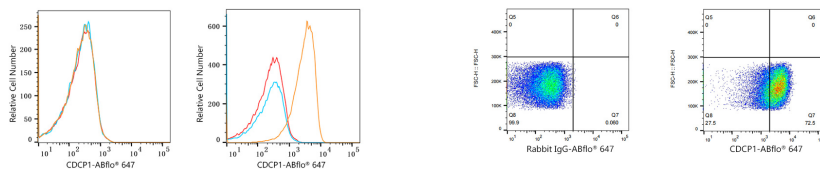
Affinity purification

Storage

Store at 2-8°C. Avoid freeze.

Buffer: PBS containing 0.2% BSA, preserved with proclin300 or sodium azide (as specified on the Certificate of Analysis), pH 7.3.

Validation Data



Flow cytometry: 1×10^6 HEL cells (negative control, left) and PC-3 cells (right) were surface-stained with ABflo® 647 Rabbit anti-Human CDCP1 mAb (A22499, 2 $\mu\text{g}/\text{mL}$, orange line) or ABflo® 647 Rabbit IgG isotype control (A22070, 2 $\mu\text{g}/\text{mL}$, blue line). Non-fluorescently stained cells were used as blank control (red line).

Flow cytometry: 1×10^6 PC-3 cells were surface-stained with ABflo® 647 Rabbit IgG isotype control (A22070, 5 $\mu\text{l}/\text{Test}$, left) or ABflo® 647 Rabbit anti-Human CDCP1 mAb (A22499, 5 $\mu\text{l}/\text{Test}$, right).