

# ABflo® 647 Rabbit anti-Human IgG (Fc) mAb

Catalog No.: A22505

## Basic Information

---

### Observed MW

Refer to figures

### Calculated MW

36kDa

### Category

Primary antibody

### Applications

FC (intra)

### Cross-Reactivity

Human

### CloneNo number

ARC53383-ABf647

### Conjugate

ABflo® 647. Ex:648nm. Em:664nm.

## Recommended Dilutions

---

<b>FC (intra)</b>	5 µl per $10^6$ cells in 100 µl volume
-------------------	---

## Background

---

Predicted to enable antigen binding activity and immunoglobulin receptor binding activity. Predicted to be involved in several processes, including activation of immune response; defense response to other organism; and phagocytosis. Predicted to act upstream of or within several processes, including immunoglobulin mediated immune response; positive regulation of hypersensitivity; and positive regulation of phagocytosis. Located in extracellular space.

## Immunogen Information

---

### Gene ID

3500

### Swiss Prot

P01857

### Immunogen

Recombinant fusion protein containing a sequence corresponding to amino acids 100-330 of human IgG1 (Fc) (P01857).


### Synonyms

## Contact

---

	400-999-6126
--	--------------

	cn.market@abclonal.com.cn
--	---------------------------

	www.abclonal.com.cn
--	---------------------

## Product Information

---

### Source

Rabbit

### Isotype

IgG

### Purification

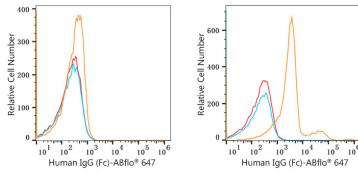
Affinity purification

### Storage

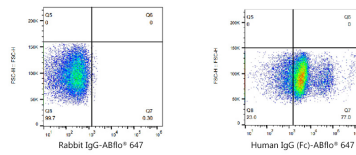
Store at 2-8°C. Avoid freeze.

Buffer: PBS with 0.03% proclin300,0.2% BSA,pH7.3.

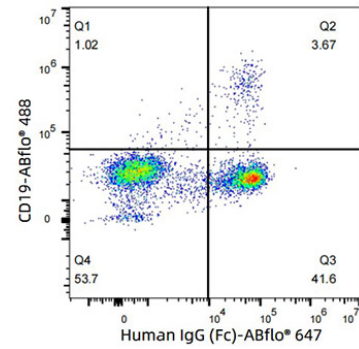
## Validation Data



Flow cytometry:  $1 \times 10^6$  293F cells (negative control, left) and 293F (Transfection, right) cells were intracellularly-stained with ABflo® 647 Rabbit anti-Human IgG (Fc) mAb (A22505, 5  $\mu$ l/Test, orange line) or ABflo® 647 Rabbit IgG isotype control (A22070, 5  $\mu$ l/Test, blue line). Non-fluorescently stained cells were used as blank control (red line).



Flow cytometry:  $1 \times 10^6$  293F (Transfection) cells were intracellularly-stained with ABflo® 647 Rabbit IgG isotype control (A22070, 5  $\mu$ l/Test, left) or ABflo® 647 Rabbit anti-Human IgG (Fc) mAb (A22505, 5  $\mu$ l/Test, right).



Flow cytometry:  $1 \times 10^6$  Human PBMC cells were intracellularly-stained with ABflo® 647 Rabbit IgG isotype control (A22070, 5  $\mu$ l/Test) or ABflo® 647 Rabbit anti-Human IgG (Fc) mAb (A22505, 5  $\mu$ l/Test). The cells were simultaneously stained with ABflo® 488 Rabbit anti-Human/Monkey CD19 mAb (A23008, 5  $\mu$ l/Test).