

# ABflo® 488 Rabbit anti-Human CD58 mAb

Catalog No.: A22512

## Basic Information

---

### Observed MW

Refer to figures

### Calculated MW

28kDa

### Category

Primary antibody

### Applications

FC

### Cross-Reactivity

Human

### CloneNo number

ARC54829-ABf488

### Conjugate

ABflo® 488. Ex:491nm. Em:516nm.

## Recommended Dilutions

---

FC 5  $\mu$ l per  $10^6$  cells in  
100  $\mu$ l volume

## Background

---

This gene encodes a member of the immunoglobulin superfamily. The encoded protein is a ligand of the T lymphocyte CD2 protein, and functions in adhesion and activation of T lymphocytes. The protein is localized to the plasma membrane. Alternatively spliced transcript variants have been described.

## Immunogen Information

---

### Gene ID

965

### Swiss Prot

P19256

### Immunogen

Recombinant fusion protein containing a sequence corresponding to amino acids 29-215 of human CD58 (NP\_001770.1).

### Synonyms


ag3; LFA3; LFA-3

## Contact

---

 | 400-999-6126

 | [cn.market@abclonal.com.cn](mailto:cn.market@abclonal.com.cn)

 | [www.abclonal.com.cn](http://www.abclonal.com.cn)

## Product Information

---

### Source

Rabbit

### Isotype

IgG

### Purification

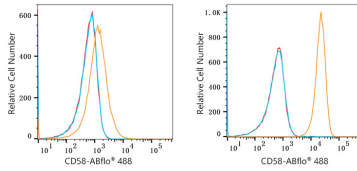
Affinity purification

### Storage

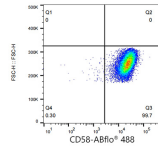
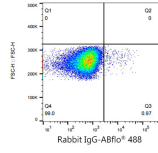
Store at 2-8°C. Avoid freeze.

Buffer: PBS with 0.03% proclin300,0.2% BSA,pH7.3.

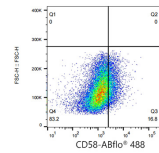
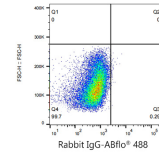
## Validation Data



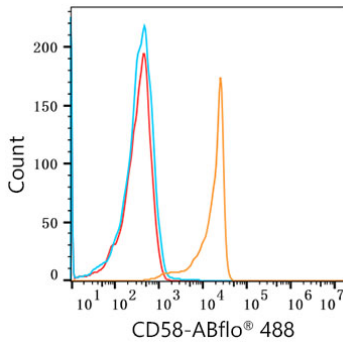
Flow cytometry:  $1 \times 10^6$  A204 cells (Low Expression, left) and MCF7 cells (right) were surface-stained with ABflo® 488 Rabbit anti-Human CD58 mAb (A22512, 5  $\mu$ l/Test, orange line) or ABflo® 488 Rabbit IgG isotype control (A22069, 5  $\mu$ l/Test, blue line). Non-fluorescently stained cells were used as blank control (red line).



Flow cytometry:  $1 \times 10^6$  MCF7 cells were surface-stained with ABflo® 488 Rabbit IgG isotype control (A22069, 5  $\mu$ l/Test, left) or ABflo® 488 Rabbit anti-Human CD58 mAb (A22512, 5  $\mu$ l/Test, right).



Flow cytometry:  $1 \times 10^6$  A204 cells (Low Expression) were intracellularly-stained with ABflo® 488 Rabbit IgG isotype control (A22069, 5  $\mu$ l/Test, left) or ABflo® 488 Rabbit anti-Human CD58 mAb (A22512, 5  $\mu$ l/Test, right).



Flow cytometry:  $1 \times 10^6$  Human PBMC were surface-stained with ABflo® 488 Rabbit anti-Human CD58 mAb (A22512, 5  $\mu$ l/Test, orange line) or ABflo® 488 Rabbit IgG isotype control (A22069, 5  $\mu$ l/Test, blue line). Non-fluorescently stained Human PBMC was used as blank control (red line).