

ABflo® 488 Rabbit anti-Human CD68 mAb

Catalog No.: A22514

Basic Information

Observed MW

Refer to figures

Calculated MW

37kDa

Category

Primary antibody

Applications

FC (intra)

Cross-Reactivity

Human

CloneNo number

ARC56633-ABf488

Conjugate

ABflo® 488. Ex:491nm. Em:516nm.

Recommended Dilutions

FC (intra) 5 µl per 10⁶ cells in
 100 µl volume

Background

This gene encodes a 110-kD transmembrane glycoprotein that is highly expressed by human monocytes and tissue macrophages. It is a member of the lysosomal/endosomal-associated membrane glycoprotein (LAMP) family. The protein primarily localizes to lysosomes and endosomes with a smaller fraction circulating to the cell surface. It is a type I integral membrane protein with a heavily glycosylated extracellular domain and binds to tissue- and organ-specific lectins or selectins. The protein is also a member of the scavenger receptor family. Scavenger receptors typically function to clear cellular debris, promote phagocytosis, and mediate the recruitment and activation of macrophages. Alternative splicing results in multiple transcripts encoding different isoforms.

Immunogen Information

Gene ID

968

Swiss Prot

P34810

Immunogen

Recombinant fusion protein containing a sequence corresponding to amino acids 22-319 of human CD68 (NP_001242.2).

Synonyms

GP110; LAMP4; SCARD1

Contact

☎ | 400-999-6126

✉ | cn.market@abclonal.com.cn

🌐 | www.abclonal.com.cn

Product Information

Source

Rabbit

Isotype

IgG

Purification

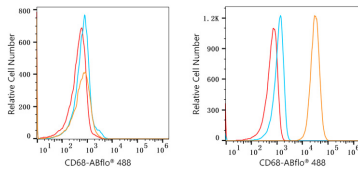
Affinity purification

Storage

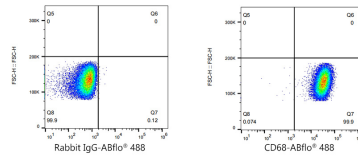
Store at 2-8°C. Avoid freeze.

Buffer: PBS with 0.03% proclin300,0.2% BSA,pH7.3.

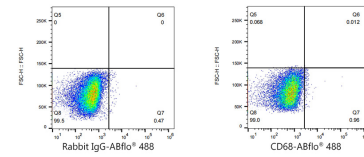
Validation Data



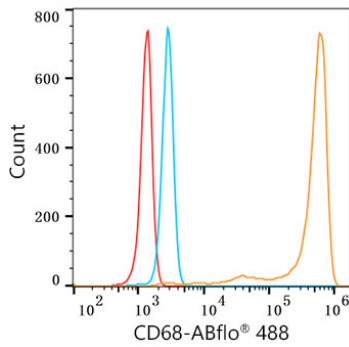
Flow cytometry: 1×10^6 MOLT-4 cells (Low Expression, left) and A-431 cells (right) were intracellularly-stained with ABflo® 488 Rabbit anti-Human CD68 mAb (A22514, 5 μ l/Test, orange line) or ABflo® 488 Rabbit IgG isotype control (A22069, 5 μ l/Test, blue line). Non-fluorescently stained cells were used as blank control (red line).



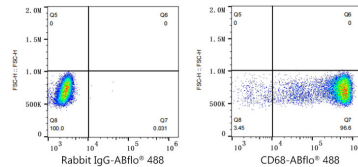
Flow cytometry: 1×10^6 A431 cells were intracellularly-stained with ABflo® 488 Rabbit IgG isotype control (A22069, 5 μ l/Test, left) or ABflo® 488 Rabbit anti-Human CD68 mAb (A22514, 5 μ l/Test, right).



Flow cytometry: 1×10^6 MOLT-4 cells (Low Expression) were intracellularly-stained with ABflo® 488 Rabbit IgG isotype control (A22069, 5 μ l/Test, left) or ABflo® 488 Rabbit anti-Human CD68 mAb (A22514, 5 μ l/Test, right).



Flow cytometry: 1×10^6 Human PBMC were intracellularly-stained with ABflo® 488 Rabbit anti-Human CD68 mAb (A22514, 5 μ l/Test, orange line) or ABflo® 488 Rabbit IgG isotype control (A22069, 5 μ l/Test, blue line). Non-fluorescently stained Human PBMC was used as blank control (red line).



Flow cytometry: 1×10^6 Human PBMC cells were intracellularly-stained with ABflo® 488 Rabbit IgG isotype control (A22069, 5 μ l/Test, left) or ABflo® 488 Rabbit anti-Human CD68 mAb (A22514, 5 μ l/Test, right).