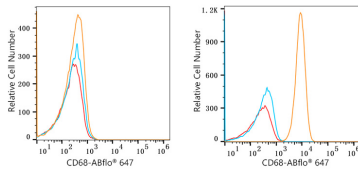
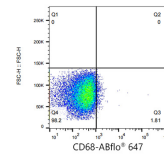
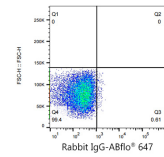
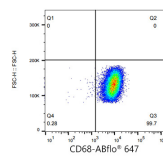
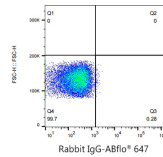


Validation Data

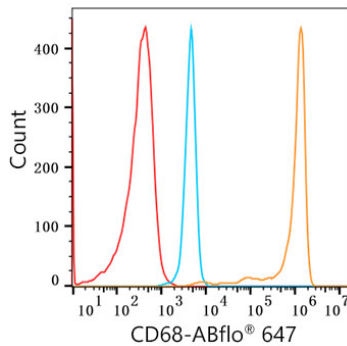


Flow cytometry: 1×10^6 MOLT-4 cells (Low Expression, left) and A-431 cells (right) were intracellularly-stained with ABflo® 647 Rabbit anti-Human CD68 mAb (A22515, 5 μ l/Test, orange line) or ABflo® 647 Rabbit IgG isotype control (A22070, 5 μ l/Test, blue line). Non-fluorescently stained cells were used as blank control (red line).

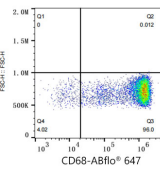
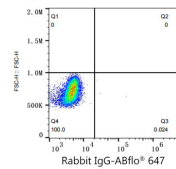


Flow cytometry: 1×10^6 A431 cells were intracellularly-stained with ABflo® 647 Rabbit IgG isotype control (A22070, 5 μ l/Test, left) or ABflo® 647 Rabbit anti-Human CD68 mAb (A22515, 5 μ l/Test, right).

Flow cytometry: 1×10^6 MOLT-4 cells (Low Expression) were intracellularly-stained with ABflo® 647 Rabbit IgG isotype control (A22070, 5 μ l/Test, left) or ABflo® 647 Rabbit anti-Human CD68 mAb (A22515, 5 μ l/Test, right).



Flow cytometry: 1×10^6 Human PBMC were intracellularly-stained with ABflo® 647 Rabbit anti-Human CD68 mAb (A22515, 5 μ l/Test, orange line) or ABflo® 647 Rabbit IgG isotype control (A22069, 5 μ l/Test, blue line). Non-fluorescently stained Human PBMC was used as blank control (red line).



Flow cytometry: 1×10^6 Human PBMC cells were intracellularly-stained with ABflo® 647 Rabbit IgG isotype control (A22070, 5 μ l/Test, left) or ABflo® 647 Rabbit anti-Human CD68 mAb (A22515, 5 μ l/Test, right).