

# Cleaved GSDMD (N Terminal) Rabbit mAb

Catalog No.: A22523 **Recombinant** **10 Publications**

## Basic Information

### Observed MW

30kDa

### Calculated MW

53kDa

### Category

Primary antibody

### Applications

WB,IHC-P,ELISA

### Cross-Reactivity

Human, Mouse, Rat

### CloneNo number

ARC57994

## Background

Gasdermin D is a member of the gasdermin family. Members of this family appear to play a role in regulation of epithelial proliferation. Gasdermin D has been suggested to act as a tumor suppressor. Alternatively spliced transcript variants have been described.

## Recommended Dilutions

**WB** 1:500 - 1:1000

**IHC-P** 1:50 - 1:200

**ELISA** Recommended starting concentration is 1 µg/mL. Please optimize the concentration based on your specific assay requirements.

## Immunogen Information

### Gene ID

79792

### Swiss Prot

P57764

### Immunogen

A synthetic peptide corresponding to a sequence within amino acids 200-300 of human Cleaved GSDMD (N Terminal) (NP\_079012.3).

### Synonyms

DF5L; DFNA5L; FKSG10; GSDMDC1; Cleaved GSDMD (N Terminal)

## Contact

☎ | 400-999-6126

✉ | [cn.market@abclonal.com.cn](mailto:cn.market@abclonal.com.cn)

🌐 | [www.abclonal.com.cn](http://www.abclonal.com.cn)

## Product Information

### Source

Rabbit

### Isotype

IgG

### Purification

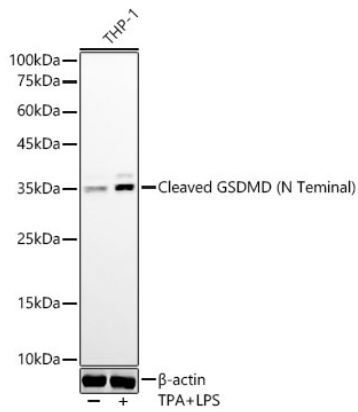
Affinity purification

### Storage

Store at -20°C. Avoid freeze / thaw cycles.

Buffer: PBS with 0.05% proclin300,0.05% BSA,50% glycerol,pH7.3.

## Validation Data



Western blot analysis of various lysates, using Cleaved GSDMD (N Terminal) Rabbit mAb (A22523) at 1:800 dilution. THP-1 cells were treated by PMA/TPA (80 nM) at 37°C for overnight and LPS (1  $\mu$ g/ml) at 37°C for 6 hours.

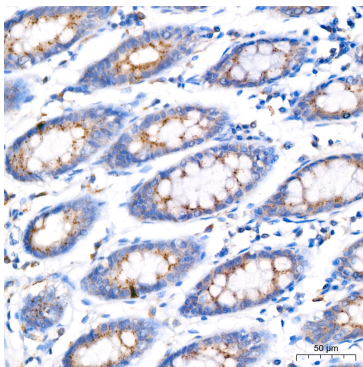
Secondary antibody: HRP-conjugated Goat anti-Rabbit IgG (H+L) (AS014) at 1:10000 dilution.

Lysates/proteins: 25 $\mu$ g per lane.

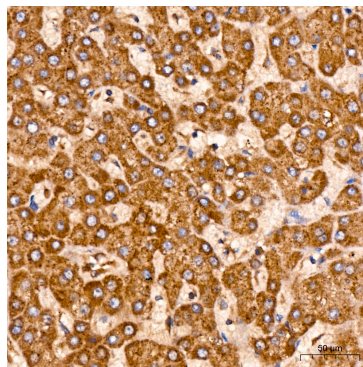
Blocking buffer: 3% nonfat dry milk in TBST.

Detection: ECL Basic Kit (RM00020).

Exposure time: 180s.



Immunohistochemistry analysis of paraffin-embedded Human colon using Cleaved GSDMD (N Terminal) Rabbit mAb (A22523) at dilution of 1:200 (40x lens). High pressure antigen retrieval performed with 0.01M Citrate Bufferr (pH 6.0) prior to IHC staining.



Immunohistochemistry analysis of paraffin-embedded Human liver using Cleaved GSDMD (N Terminal) Rabbit mAb (A22523) at dilution of 1:200 (40x lens). High pressure antigen retrieval performed with 0.01M Citrate Bufferr (pH 6.0) prior to IHC staining.