

ALDH1A1 Rabbit PolymAb®

Catalog No.: A22531PM

Basic Information

Observed MW

55kDa

Calculated MW

55kDa

Category

Primary antibody

Applications

WB, IHC-P, IF/ICC, ELISA

Cross-Reactivity

Human, Mouse, Rat

Background

The protein encoded by this gene belongs to the aldehyde dehydrogenase family. Aldehyde dehydrogenase is the next enzyme after alcohol dehydrogenase in the major pathway of alcohol metabolism. There are two major aldehyde dehydrogenase isozymes in the liver, cytosolic and mitochondrial, which are encoded by distinct genes, and can be distinguished by their electrophoretic mobility, kinetic properties, and subcellular localization. This gene encodes the cytosolic isozyme. Studies in mice show that through its role in retinol metabolism, this gene may also be involved in the regulation of the metabolic responses to high-fat diet.

Recommended Dilutions

WB 1:10000 - 1:60000

IHC-P 1:100 - 1:500

IF/ICC 1:500 - 1:1000

ELISA Recommended starting concentration is 1 µg/mL. Please optimize the concentration based on your specific assay requirements.

Immunogen Information

Gene ID

216

Swiss Prot

P00352

Immunogen

A synthetic peptide corresponding to a sequence within amino acids 250-350 of human ALDH1A1 Rabbit PolymAb® (NP_000680.2).

Synonyms

ALDC; ALDH1; HEL-9; HEL12; PUMB1; ALDH11; RALDH1; ALDH-E1; HEL-S-53e

Contact

☎ | 400-999-6126

✉ | cn.market@abclonal.com.cn

🌐 | www.abclonal.com.cn

Product Information

Source

Rabbit

Isotype

IgG

Purification

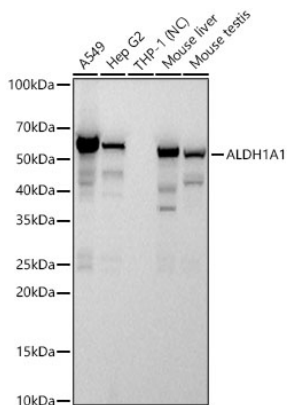
Affinity purification

Storage

Store at -20°C. Avoid freeze / thaw cycles.

Buffer: PBS with 0.05% proclin300, 0.05% BSA, 50% glycerol, pH7.3.

Validation Data



Western blot analysis of various lysates, using ALDH1A1 Rabbit PolymAb® (A22531PM) at 1:50000 dilution.

Secondary antibody: HRP-conjugated Goat anti-Rabbit IgG (H+L) (AS014) at 1:10000 dilution.

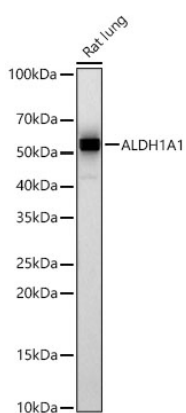
Lysates/proteins: 25µg per lane.

Blocking buffer: 3% nonfat dry milk in TBST.

Detection: ECL Basic Kit (RM00020).

Negative control (NC): THP-1

Exposure time: 20s.

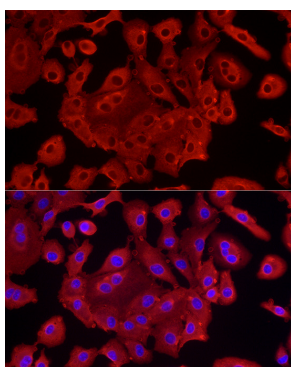


Western blot analysis of lysates from rat lung, using ALDH1A1 Rabbit PolymAb® (A22531PM) at 1:50000 dilution.

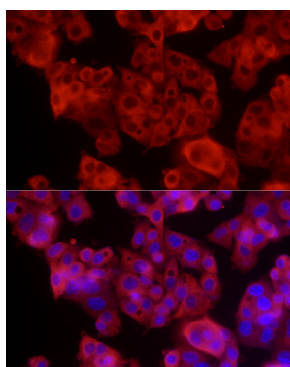
Secondary antibody: HRP-conjugated Goat anti-Rabbit IgG (H+L) (AS014) at 1:10000 dilution.

Lysates/proteins: 25µg per lane. Blocking buffer: 3% nonfat dry milk in TBST.

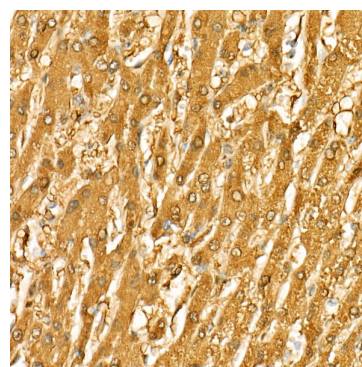
Detection: ECL Basic Kit (RM00020). Exposure time: 90s.



Immunofluorescence analysis of A-549 cells using ALDH1A1 Rabbit PolymAb® (A22531PM) at dilution of 1:800 (40x lens). Secondary antibody: Cy3-conjugated Goat anti-Rabbit IgG (H+L) (AS007) at 1:500 dilution. Blue: DAPI for nuclear staining.

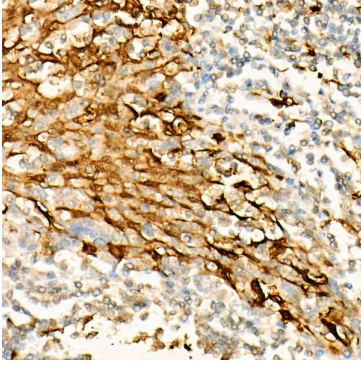


Immunofluorescence analysis of HepG2 cells using ALDH1A1 Rabbit PolymAb® (A22531PM) at dilution of 1:800 (40x lens). Secondary antibody: Cy3-conjugated Goat anti-Rabbit IgG (H+L) (AS007) at 1:500 dilution. Blue: DAPI for nuclear staining.

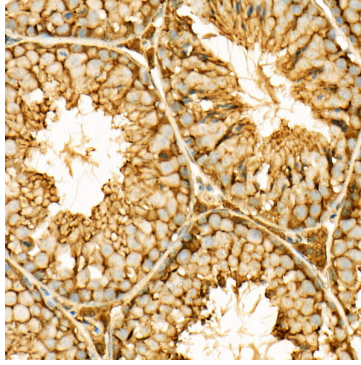


Immunohistochemistry analysis of paraffin-embedded Human liver cancer using ALDH1A1 Rabbit PolymAb® (A22531PM) at dilution of 1:500 (40x lens). High pressure antigen retrieval performed with 0.01M Citrate Bufferr (pH 6.0) prior to IHC staining.

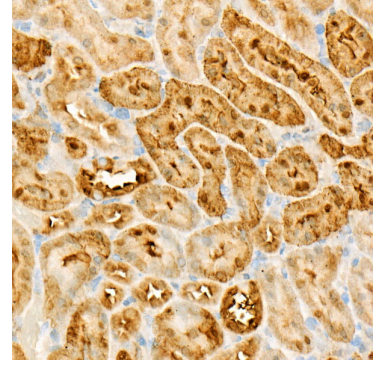
Validation Data



Immunohistochemistry analysis of paraffin-embedded Human tonsil using ALDH1A1 Rabbit PolymAb® (A22531PM) at dilution of 1:500 (40x lens). High pressure antigen retrieval performed with 0.01M Citrate Bufferr (pH 6.0) prior to IHC staining.



Immunohistochemistry analysis of paraffin-embedded Mouse testis using ALDH1A1 Rabbit PolymAb® (A22531PM) at dilution of 1:500 (40x lens). High pressure antigen retrieval performed with 0.01M Citrate Bufferr (pH 6.0) prior to IHC staining.



Immunohistochemistry analysis of paraffin-embedded Rat kidney using ALDH1A1 Rabbit PolymAb® (A22531PM) at dilution of 1:500 (40x lens). High pressure antigen retrieval performed with 0.01M Citrate Bufferr (pH 6.0) prior to IHC staining.