

# Cleaved PARP (Asp214) Rabbit pAb

Catalog No.: A22535 **3 Publications**

## Basic Information

**Observed MW**

89kDa

**Calculated MW**

113kDa

**Category**

Primary antibody

**Applications**

ELISA,WB

**Cross-Reactivity**

Mouse

## Background

Enables NAD<sup>+</sup> ADP-ribosyltransferase activity; chromatin binding activity; and protein ADP-ribosylase activity. Involved in negative regulation of telomere maintenance via telomere lengthening; positive regulation of single strand break repair; and voluntary musculoskeletal movement. Acts upstream of or within several processes, including DNA metabolic process; behavioral response to cocaine; and protein poly-ADP-ribosylation. Located in cytoplasm; nucleolus; and nucleoplasm. Part of protein-containing complex. Is expressed in several structures, including Peyer's patch; brain; gut; immune system; and retina. Human ortholog(s) of this gene implicated in several diseases, including arthritis; bacterial meningitis; neurodegenerative disease (multiple); stomach carcinoma; and type 2 diabetes mellitus. Orthologous to human PARP1 (poly(ADP-ribose) polymerase 1).

## Recommended Dilutions

WB 1:100 - 1:500

## Immunogen Information

**Gene ID**

11545

**Swiss Prot**

Q921K2

**Immunogen**

A synthetic peptide corresponding to a sequence within amino acids 201-300 of Mouse PARP (Asp214) (NP\_031441.2).

**Synonyms**

PARP; PPOL; ARTD1; Adprp; Adprt1; msPARP; parp-1; sPARP-1; 5830444G22Rik; Cleaved PARP (Asp214)

## Contact

 | 400-999-6126 | [cn.market@abclonal.com.cn](mailto:cn.market@abclonal.com.cn) | [www.abclonal.com.cn](http://www.abclonal.com.cn)

## Product Information

**Source**

Rabbit

**Isotype**

IgG

**Purification**

Affinity purification

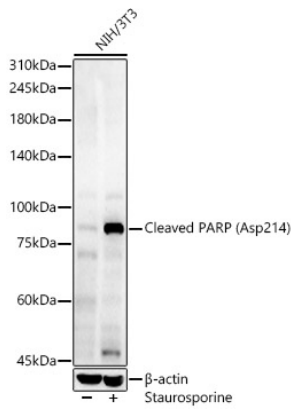
**Storage**

Store at -20°C. Avoid freeze / thaw cycles.

Buffer: PBS with 0.05% proclin300,50% glycerol,pH7.3.

## Validation Data

---



Western blot analysis of lysates from NIH/3T3 cells, using Cleaved PARP (Asp214) Rabbit pAb (A22535) at 1:400 dilution. NIH/3T3 cells were treated by staurosporine (1  $\mu$ M) for 3 hours.  
Secondary antibody: HRP Goat Anti-Rabbit IgG (H+L) (AS014) at 1:10000 dilution.  
Lysates/proteins: 25  $\mu$ g per lane.  
Blocking buffer: 3% nonfat dry milk in TBST.  
Detection: ECL Enhanced Kit (RM00021).  
Exposure time: 90s.