

RGL3 Rabbit pAb

Catalog No.: A22552

Basic Information

Observed MW

62kDa

Calculated MW

Category

Primary antibody

Applications

WB, ELISA

Cross-Reactivity

Arabidopsis thaliana

Background

Encodes a DELLA subfamily member that acts as a negative regulator of GA signaling and as a coactivator of ABI3 to promote seed storage protein biosynthesis during the seed maturation stage. Involved in hyperosmotic salinity response, jasmonic acid mediated signaling pathway, negative regulation of gibberellic acid mediated signaling pathway, negative regulation of seed germination, regulation of DNA-templated transcription, regulation of reactive oxygen species metabolic process, regulation of seed dormancy process, response to abscisic acid, response to ethylene, salicylic acid mediated signaling pathway.

Recommended Dilutions

WB 1:100 - 1:500

ELISA Recommended starting concentration is 1 µg/mL. Please optimize the concentration based on your specific assay requirements.

Immunogen Information

Gene ID

Swiss Prot

Immunogen

Recombinant protein (or fragment). This information is considered to be commercially sensitive.

Synonyms

Contact

 | 400-999-6126

 | cn.market@abclonal.com.cn

 | www.abclonal.com.cn

Product Information

Source

Rabbit

Isotype

IgG

Purification

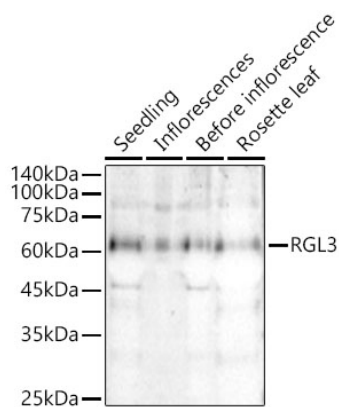
Affinity purification

Storage

Store at -20°C. Avoid freeze / thaw cycles.

Buffer: PBS containing 50% glycerol, preserved with proclin300 or sodium azide (as specified on the Certificate of Analysis), pH 7.3.

Validation Data



Western blot analysis of extracts of various tissues from *Arabidopsis thaliana*, using RGL3 Rabbit pAb (A22552) at 1:500 dilution.

Secondary antibody: HRP-conjugated Goat anti-Rabbit IgG (H+L) (AS014) at 1:10000 dilution.

Lysates/proteins: 25µg per lane.

Blocking buffer: 3% nonfat dry milk in TBST.

Detection: ECL Basic Kit (RM00020).

Exposure time: 90s.