

Cleaved Gasdermin B Rabbit pAb

Catalog No.: A22553

Basic Information

Observed MW

30kDa

Calculated MW

18kDa/45kDa/46kDa/47kDa

Category

Primary antibody

Applications

WB, ELISA

Cross-Reactivity

Human

Background

This gene encodes a member of the gasdermin-domain containing protein family. Other gasdermin-family genes are implicated in the regulation of apoptosis in epithelial cells, and are linked to cancer. Alternative splicing and the use of alternative promoters results in multiple transcript variants. Additional variants have been described, but they are candidates for nonsense-mediated mRNA decay (NMD) and are unlikely to be protein-coding.

Recommended Dilutions

WB 1:100 - 1:500

ELISA Recommended starting concentration is 1 µg/mL. Please optimize the concentration based on your specific assay requirements.

Immunogen Information

Gene ID

55876

Swiss Prot

Q8TAX9-6

Immunogen

Recombinant fusion protein containing a sequence corresponding to amino acids 144-244 of human Cleaved Gasdermin B. (NP_001159431.1).

Synonyms

GSDML; PP4052; GSDMB-1; PRO2521; Cleaved Gasdermin B

Contact

☎ | 400-999-6126

✉ | cn.market@abclonal.com.cn

🌐 | www.abclonal.com.cn

Product Information

Source

Rabbit

Isotype

IgG

Purification

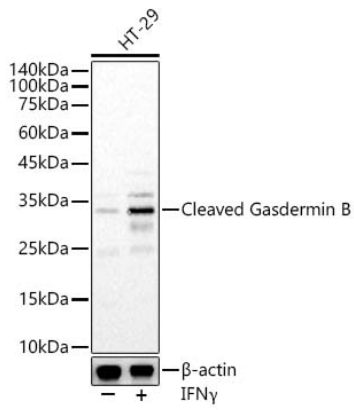
Affinity purification

Storage

Store at -20°C. Avoid freeze / thaw cycles.

Buffer: PBS with 0.05% proclin300, 50% glycerol, pH7.3.

Validation Data



Western blot analysis of lysates from HT-29 cells, using Cleaved Gasdermin B Rabbit pAb (A22553) at 1:400 dilution. HT-29 cells were treated by IFN γ (50ng/ml) for 8 hours.
Secondary antibody: HRP-conjugated Goat anti-Rabbit IgG (H+L) (AS014) at 1:10000 dilution.
Lysates/proteins: 25 μ g per lane.
Blocking buffer: 3% nonfat dry milk in TBST.
Detection: ECL Basic Kit (RM00020).
Exposure time: 5s.