

NG2/CSPG4 Rabbit pAb

Catalog No.: A22556

Basic Information

Observed MW

270-300kDa

Calculated MW

252kDa

Category

Primary antibody

Applications

ELISA, WB

Cross-Reactivity

Human, Mouse, Rat

Background

Enables coreceptor activity. Acts upstream of or within several processes, including platelet-derived growth factor receptor signaling pathway; positive regulation of MAPK cascade; and ruffle assembly. Located in plasma membrane and ruffle. Is expressed in several structures, including brain; jaw; respiratory system; retina; and skeleton. Human ortholog(s) of this gene implicated in relapsing-remitting multiple sclerosis. Orthologous to human CSPG4 (chondroitin sulfate proteoglycan 4).

Recommended Dilutions

WB 1:500 - 1:1000

Immunogen Information

Gene ID

121021

Swiss Prot

Q8VHY0

Immunogen

Recombinant fusion protein containing a sequence corresponding to amino acids 1345-1572 of human NG2/CSPG4. (NP_620570.2).

Synonyms

AN2; NG2; Cspg4a; 4732461B14Rik; NG2/CSPG4

Contact

☎ | 400-999-6126

✉ | cn.market@abclonal.com.cn

🌐 | www.abclonal.com.cn

Product Information

Source

Rabbit

Isotype

IgG

Purification

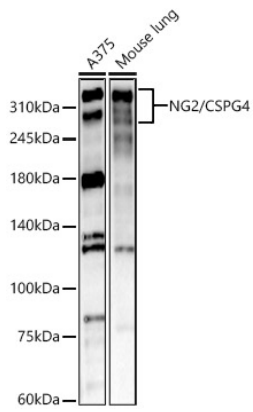
Affinity purification

Storage

Store at -20°C. Avoid freeze / thaw cycles.

Buffer: PBS with 0.05% proclin300, 50% glycerol, pH7.3.

Validation Data



Western blot analysis of various lysates, using NG2/CSPG4 Rabbit pAb (A22556) at 1:1000 dilution.
Secondary antibody: HRP Goat Anti-Rabbit IgG (H+L) (AS014) at 1:10000 dilution.
Lysates/proteins: 25µg per lane.
Blocking buffer: 3% nonfat dry milk in TBST.
Detection: ECL Basic Kit (RM00020).
Exposure time: 180s.