

NEDD8 Rabbit mAb

Catalog No.: A22568 **Recombinant**

Basic Information

Observed MW

9kDa

Calculated MW

9kDa

Category

Primary antibody

Applications

ELISA, WB

Cross-Reactivity

Human, Mouse, Rat

CloneNo number

ARC58460

Background

Enables ubiquitin protein ligase binding activity. Acts upstream of or within protein neddylation. Located in cytosol and nucleoplasm. Biomarker of Parkinson's disease and malignant astrocytoma.

Recommended Dilutions

WB 1:2000 - 1:20000

Immunogen Information

Gene ID

4738

Swiss Prot

Q15843

Immunogen

Recombinant fusion protein containing a sequence corresponding to amino acids 1-81 of human NEDD8 (NP_006147.1).

Synonyms

NEDD-8; NEDD8

Contact

☎ | 400-999-6126

✉ | cn.market@abclonal.com.cn

🌐 | www.abclonal.com.cn

Product Information

Source

Rabbit

Isotype

IgG

Purification

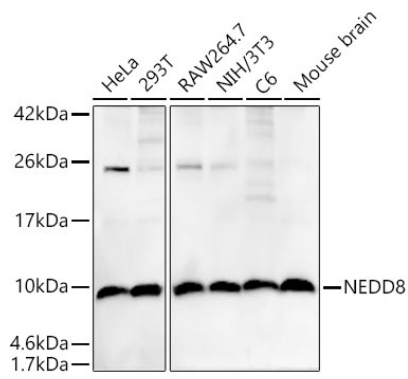
Affinity purification

Storage

Store at -20°C. Avoid freeze / thaw cycles.

Buffer: PBS with 0.05% proclin300, 0.05% BSA, 50% glycerol, pH7.3.

Validation Data



Western blot analysis of various lysates, using NEDD8 antibody (A22568) at 1:20000 dilution.
Secondary antibody: HRP Goat Anti-Rabbit IgG (H+L) (AS014) at 1:10000 dilution.
Lysates/proteins: 25µg per lane.
Blocking buffer: 3% nonfat dry milk in TBST.
Detection: ECL Enhanced Kit (RM00021).
Exposure time: 150s.