

ABflo® 488 Rabbit anti-Human TROP-2 mAb

Catalog No.: A22577

Basic Information

Observed MW

Refer to figures

Calculated MW

36kDa

Category

Primary antibody

Applications

IF/ICC,FC

Cross-Reactivity

Human

CloneNo number

ARC51505

Conjugate

ABflo® 488. Ex:491nm. Em:516nm.

Recommended Dilutions

IF/ICC 1:50 - 1:100

FC 5 µl per 10⁶ cells in
100 µl volume

Background

This intronless gene encodes a carcinoma-associated antigen. This antigen is a cell surface receptor that transduces calcium signals. Mutations of this gene have been associated with gelatinous drop-like corneal dystrophy.

Immunogen Information

Gene ID

4070

Swiss Prot

P09758

Immunogen

Recombinant protein (or fragment). This information is considered to be commercially sensitive.

Synonyms

EGP1; GP50; M1S1; EGP-1; TROP2; GA7331; GA733-1

Contact

☎ | 400-999-6126

✉ | cn.market@abclonal.com.cn

🌐 | www.abclonal.com.cn

Product Information

Source

Rabbit

Isotype

IgG

Purification

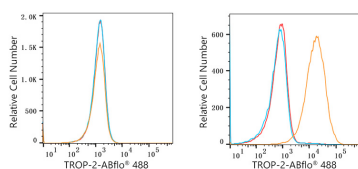
Affinity purification

Storage

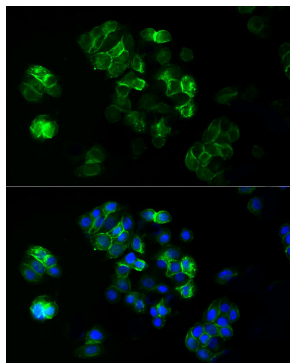
Store at 2-8°C. Avoid freeze.

Buffer: PBS containing 0.2% BSA, preserved with proclin300 or sodium azide (as specified on the Certificate of Analysis), pH 7.3.

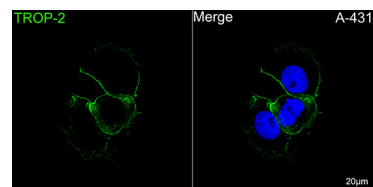
Validation Data



Flow cytometry: 1X10⁶ U-118MG cells (negative control, left) and MCF7 cells (right) were surface-stained with ABflo® 488 Rabbit anti-Human TROP-2 mAb (A22577, 5 µl/Test, orange line) or ABflo® 488 Rabbit IgG isotype control (A22069, 5 µl/Test, blue line). Non-fluorescently stained cells were used as blank control (red line).



Immunofluorescence analysis of MCF7 cells using ABflo® 488 Rabbit anti-Human TROP-2 mAb (A22577) at dilution of 1:20 (40x lens). Blue: DAPI for nuclear staining.



Confocal imaging of A-431 cells using ABflo® 488 Rabbit anti-Human TROP-2 mAb (A22577, dilution 1:100). DAPI was used for nuclear staining (Blue). Objective: 100x.