

# Integrin- $\beta$ 1/CD29 Rabbit PolymAb®

Catalog No.: A22599PM

## Basic Information

### Observed MW

135kDa

### Calculated MW

88kDa

### Category

Primary antibody

### Applications

WB, IHC-P, IF/ICC, ELISA

### Cross-Reactivity

Human, Mouse

## Background

Integrins are heterodimeric proteins made up of alpha and beta subunits. At least 18 alpha and 8 beta subunits have been described in mammals. Integrin family members are membrane receptors involved in cell adhesion and recognition in a variety of processes including embryogenesis, hemostasis, tissue repair, immune response and metastatic diffusion of tumor cells. This gene encodes a beta subunit. Multiple alternatively spliced transcript variants which encode different protein isoforms have been found for this gene.

## Recommended Dilutions

**WB** 1:2000 - 1:10000

**IHC-P** 1:500 - 1:1000

**IF/ICC** 1:50 - 1:200

**ELISA** Recommended starting concentration is 1  $\mu$ g/mL. Please optimize the concentration based on your specific assay requirements.

## Immunogen Information

### Gene ID

3688

### Swiss Prot

P05556

### Immunogen

Recombinant fusion protein containing a sequence corresponding to amino acids 1-728 of human Integrin- $\beta$ 1/CD29 Rabbit PolymAb® (NP\_002202.2).

### Synonyms

CD29; FNRB; MDF2; VLAB; GPIIA; MSK12; VLA-BETA

## Contact

☎ | 400-999-6126

✉ | [cn.market@abclonal.com.cn](mailto:cn.market@abclonal.com.cn)

🌐 | [www.abclonal.com.cn](http://www.abclonal.com.cn)

## Product Information

### Source

Rabbit

### Isotype

IgG

### Purification

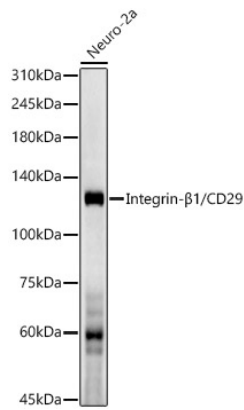
Affinity purification

### Storage

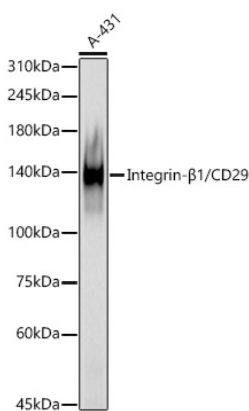
Store at -20°C. Avoid freeze / thaw cycles.

Buffer: PBS with 0.05% proclin300, 0.05% BSA, 50% glycerol, pH7.3.

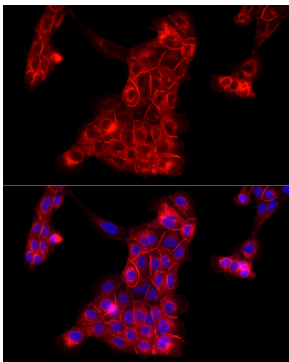
## Validation Data



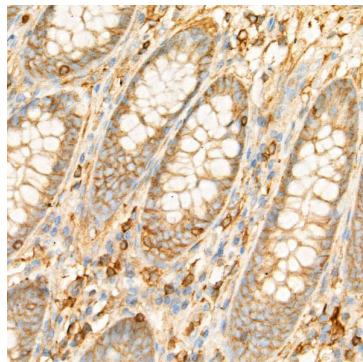
Western blot analysis of lysates from Neuro-2a cells, using Integrin- $\beta$ 1/CD29 Rabbit PolymAb® (A22599PM) at 1:10000 dilution.  
Secondary antibody: HRP-conjugated Goat anti-Rabbit IgG (H+L) (AS014) at 1:10000 dilution.  
Lysates/proteins: 25 $\mu$ g per lane.  
Blocking buffer: 3% nonfat dry milk in TBST.  
Detection: ECL Enhanced Kit (RM00021).  
Exposure time: 180s.



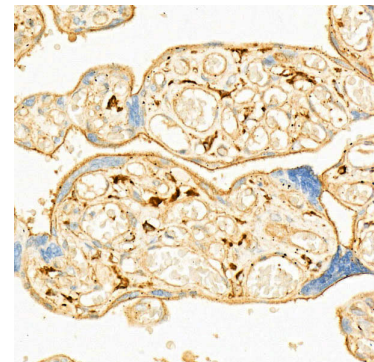
Western blot analysis of lysates from A-431 cells, using Integrin- $\beta$ 1/CD29 Rabbit PolymAb® (A22599PM) at 1:10000 dilution.  
Secondary antibody: HRP-conjugated Goat anti-Rabbit IgG (H+L) (AS014) at 1:10000 dilution.  
Lysates/proteins: 25 $\mu$ g per lane.  
Blocking buffer: 3% nonfat dry milk in TBST.  
Detection: ECL Enhanced Kit (RM00021).  
Exposure time: 180s.



Immunofluorescence analysis of A-431 cells using Integrin- $\beta$ 1/CD29 Rabbit PolymAb® (A22599PM) at dilution of 1:200 (40x lens). Secondary antibody: Cy3-conjugated Goat anti-Rabbit IgG (H+L) (AS007) at 1:500 dilution. Blue: DAPI for nuclear staining.



Immunohistochemistry analysis of paraffin-embedded Human colon using Integrin- $\beta$ 1/CD29 Rabbit PolymAb® (A22599PM) at dilution of 1:1000 (40x lens). High pressure antigen retrieval performed with 0.01M Citrate Bufferr (pH 6.0) prior to IHC staining.



Immunohistochemistry analysis of paraffin-embedded Human placenta using Integrin- $\beta$ 1/CD29 Rabbit PolymAb® (A22599PM) at dilution of 1:1000 (40x lens). High pressure antigen retrieval performed with 0.01M Citrate Bufferr (pH 6.0) prior to IHC staining.