

# CAR/CXADR Rabbit mAb

Catalog No.: A22607 **Recombinant**

## Basic Information

### Observed MW

40-50kDa

### Calculated MW

40kDa

### Category

Primary antibody

### Applications

ELISA, WB, IF/ICC

### Cross-Reactivity

Human, Mouse, Rat

### CloneNo number

ARC58170

## Background

The protein encoded by this gene is a type I membrane receptor for group B coxsackieviruses and subgroup C adenoviruses. Several transcript variants encoding different isoforms have been found for this gene. Pseudogenes of this gene are found on chromosomes 15, 18, and 21.

## Recommended Dilutions

<b>WB</b>	1:2000 - 1:10000
<b>IF/ICC</b>	1:500 - 1:1000

## Immunogen Information

### Gene ID

1525

### Swiss Prot

P78310

### Immunogen

Recombinant fusion protein containing a sequence corresponding to amino acids 20-237 of human CAR/CXADR. (NP\_001329.1).

### Synonyms

CAR; HCAR; CAR4/6; CAR/CXADR

## Contact

 | 400-999-6126

 | [cn.market@abclonal.com.cn](mailto:cn.market@abclonal.com.cn)

 | [www.abclonal.com.cn](http://www.abclonal.com.cn)

## Product Information

### Source

Rabbit

### Isotype

IgG

### Purification

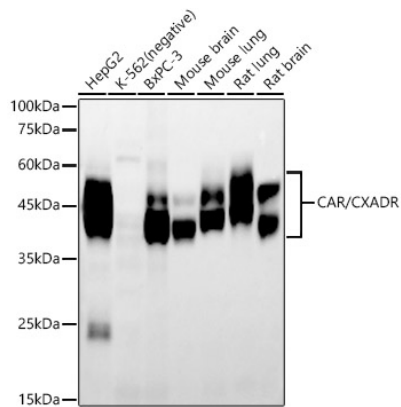
Affinity purification

### Storage

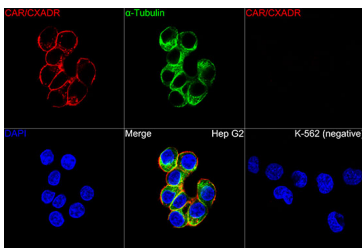
Store at -20°C. Avoid freeze / thaw cycles.

Buffer: PBS with 0.05% proclin300, 0.05% BSA, 50% glycerol, pH7.3.

## Validation Data



Western blot analysis of various lysates, using CAR/CXADR Rabbit mAb (A22607) at 1:10000 dilution.  
Secondary antibody: HRP Goat Anti-Rabbit IgG (H+L) (AS014) at 1:10000 dilution.  
Lysates/proteins: 25µg per lane.  
Blocking buffer: 3% nonfat dry milk in TBST.  
Detection: ECL Enhanced Kit (RM00021).  
Exposure time: 60s.



Confocal imaging of Hep G2 and K-562(negative sample) cells using CAR/CXADR Rabbit mAb (A22607,dilution 1:700)(Red). The cells were counterstained with α-Tubulin Mouse mAb (AC012,dilution 1:400) (Green). DAPI was used for nuclear staining (blue). Objective: 100x.