

# CYP24A1 Rabbit mAb

Catalog No.: A22615 **Recombinant**

## Basic Information

### Observed MW

Refer to figures

### Calculated MW

59kDa

### Category

Primary antibody

### Applications

ELISA, IHC-P, IF/ICC

### Cross-Reactivity

Human

### CloneNo number

ARC58733

## Background

This gene encodes a member of the cytochrome P450 superfamily of enzymes. The cytochrome P450 proteins are monooxygenases which catalyze many reactions involved in drug metabolism and synthesis of cholesterol, steroids and other lipids. This mitochondrial protein initiates the degradation of 1,25-dihydroxyvitamin D3, the physiologically active form of vitamin D3, by hydroxylation of the side chain. In regulating the level of vitamin D3, this enzyme plays a role in calcium homeostasis and the vitamin D endocrine system. Alternatively spliced transcript variants encoding different isoforms have been found for this gene.

## Recommended Dilutions

IHC-P	1:100 - 1:500
IF/ICC	1:50 - 1:200

## Immunogen Information

### Gene ID

1591

### Swiss Prot

Q07973

### Immunogen

Recombinant fusion protein containing a sequence corresponding to amino acids 36-410 of human CYP24A1. (NP\_000773.2).

### Synonyms

CP24; HCAI; CYP24; HCINF1; P450-CC24; CYP24A1

## Contact

 | 400-999-6126

 | [cn.market@abclonal.com.cn](mailto:cn.market@abclonal.com.cn)

 | [www.abclonal.com.cn](http://www.abclonal.com.cn)

## Product Information

### Source

Rabbit

### Isotype

IgG

### Purification

Affinity purification

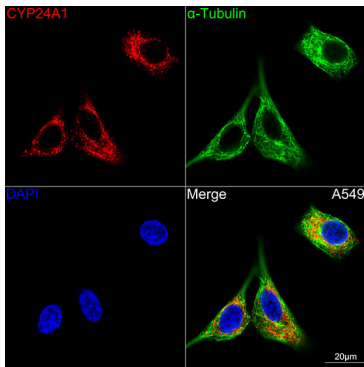
### Storage

Store at -20°C. Avoid freeze / thaw cycles.

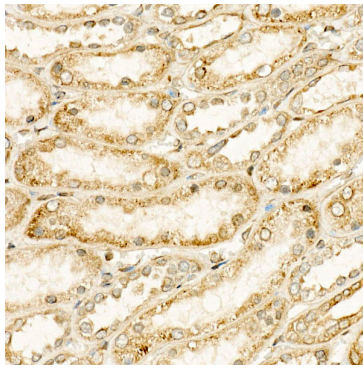
Buffer: PBS with 0.05% proclin300, 0.05% BSA, 50% glycerol, pH7.3.

## Validation Data

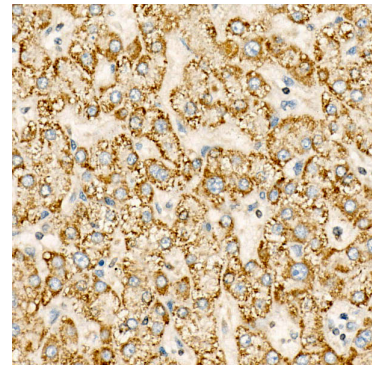
---



Confocal imaging of A549 cells using CYP24A1 Rabbit mAb (A22615, dilution 1:200) (Red). The cells were counterstained with  $\alpha$ -Tubulin Mouse mAb (AC012, dilution 1:400) (Green). DAPI was used for nuclear staining (blue). Objective: 100x.



Immunohistochemistry analysis of paraffin-embedded Human kidney using CYP24A1 Rabbit mAb (A22615) at dilution of 1:400 (40x lens). High pressure antigen retrieval performed with 0.01M Citrate Bufferr (pH 6.0) prior to IHC staining.



Immunohistochemistry analysis of paraffin-embedded Human liver using CYP24A1 Rabbit mAb (A22615) at dilution of 1:400 (40x lens). High pressure antigen retrieval performed with 0.01M Citrate Bufferr (pH 6.0) prior to IHC staining.