

CD215/IL-15R alpha Rabbit mAb

Catalog No.: A22616 **Recombinant**

Basic Information

Observed MW

40-55kDa

Calculated MW

28kDa

Category

Primary antibody

Applications

WB,FC,ELISA

Cross-Reactivity

Human

CloneNo number

ARC55696

Background

This gene encodes a cytokine receptor that specifically binds interleukin 15 (IL15) with high affinity. The receptors of IL15 and IL2 share two subunits, IL2R beta and IL2R gamma. This forms the basis of many overlapping biological activities of IL15 and IL2. The protein encoded by this gene is structurally related to IL2R alpha, an additional IL2-specific alpha subunit necessary for high affinity IL2 binding. Unlike IL2RA, IL15RA is capable of binding IL15 with high affinity independent of other subunits, which suggests distinct roles between IL15 and IL2. This receptor is reported to enhance cell proliferation and expression of apoptosis inhibitor BCL2L1/BCL2-XL and BCL2. Multiple alternatively spliced transcript variants of this gene have been reported.

Recommended Dilutions

WB 1:2000 - 1:10000**FC** 1:500 - 1:1000**ELISA** Recommended starting concentration is 1 µg/mL. Please optimize the concentration based on your specific assay requirements.

Immunogen Information

Gene ID

3601

Swiss Prot

Q13261

Immunogen

Recombinant protein of human CD215/IL-15R alpha.

Synonyms

CD215; CD215/IL-15R alpha

Contact

 | 400-999-6126 | cn.market@abclonal.com.cn | www.abclonal.com.cn

Product Information

Source

Rabbit

Isotype

IgG

Purification

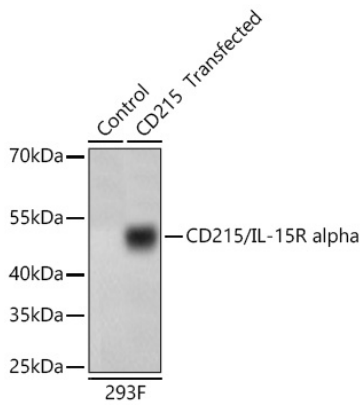
Affinity purification

Storage

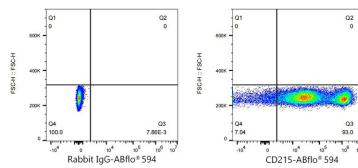
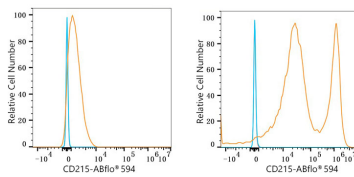
Store at -20°C. Avoid freeze / thaw cycles.

Buffer: PBS with 0.05% proclin300,0.05% BSA,50% glycerol,pH7.3.

Validation Data



Western blot analysis of lysates from wild type (WT) and 293F cells transfected with CD215/IL-15R using CD215/IL-15R alpha Rabbit mAb (A22616) at 1:1000 dilution incubated overnight at 4°C.
 Secondary antibody: HRP-conjugated Goat anti-Rabbit IgG (H+L) (AS014) at 1:10000 dilution.
 Lysates/proteins: 20 µg per lane.
 Blocking buffer: 3% nonfat dry milk in TBST.
 Detection: ECL Basic Kit (RM00020)
 .Exposure time: 10s.



Flow cytometry: 1×10^6 293F cells (negative control, left) and 293F (Transfection, right) cells were surface-stained with CD215/IL-15R alpha Rabbit mAb (A22616, 2 µg/mL, orange line) or ABflo® 594 Rabbit IgG isotype control (A23821, 5 µl/Test, blue line). Non-fluorescently stained cells were used as blank control (red line).

Flow cytometry: 1×10^6 293F (Transfection) cells were surface-stained with ABflo® 594 Rabbit IgG isotype control (A23821, 5 µl/Test, left) or CD215/IL-15R alpha Rabbit mAb (A22616, 2 µg/mL, right).