

MIF Rabbit mAb

Catalog No.: A22623

Recombinant

1 Publications

Basic Information

Observed MW

14kDa

Calculated MW

12kDa

Category

Primary antibody

Applications

ELISA, WB, IHC-P

Cross-Reactivity

Human, Mouse, Rat

CloneNo number

ARC57867

Background

This gene encodes a lymphokine involved in cell-mediated immunity, immunoregulation, and inflammation. It plays a role in the regulation of macrophage function in host defense through the suppression of anti-inflammatory effects of glucocorticoids. This lymphokine and the JAB1 protein form a complex in the cytosol near the peripheral plasma membrane, which may indicate an additional role in integrin signaling pathways.

Recommended Dilutions

WB 1:10000 - 1:70000

IHC-P 1:500 - 1:1000

Immunogen Information

Gene ID

4282

Swiss Prot

P14174

Immunogen

Recombinant fusion protein containing a sequence corresponding to amino acids 114-199 of human MIF (NP_002406.1).

Synonyms

GIF; GLIF; MMIF; MIF

Contact

☎ | 400-999-6126

✉ | cn.market@abclonal.com.cn

🌐 | www.abclonal.com.cn

Product Information

Source

Rabbit

Isotype

IgG

Purification

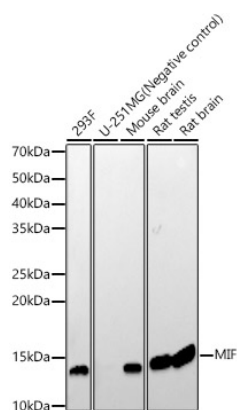
Affinity purification

Storage

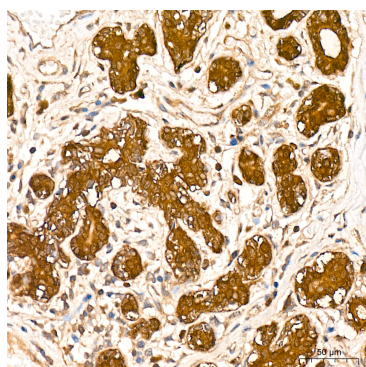
Store at -20°C. Avoid freeze / thaw cycles.

Buffer: PBS with 0.05% proclin300, 0.05% BSA, 50% glycerol, pH7.3.

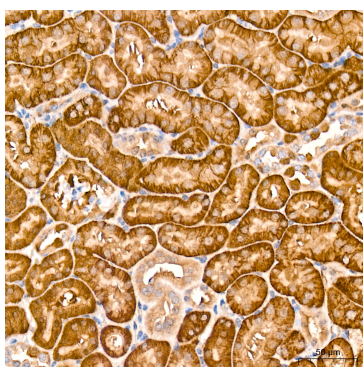
Validation Data



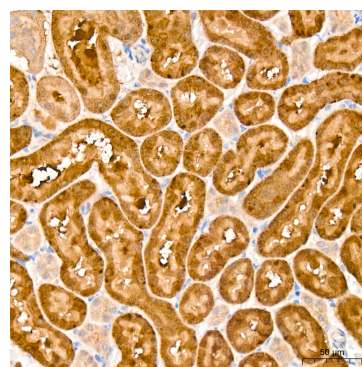
Western blot analysis of various lysates, using MIF Rabbit mAb (A22623) at 1:60000 dilution.
 Secondary antibody: HRP Goat Anti-Rabbit IgG (H+L) (AS014) at 1:10000 dilution.
 Lysates/proteins: 25µg per lane.
 Blocking buffer: 3% nonfat dry milk in TBST.
 Detection: ECL Enhanced Kit (RM00021).
 Exposure time: 180s.



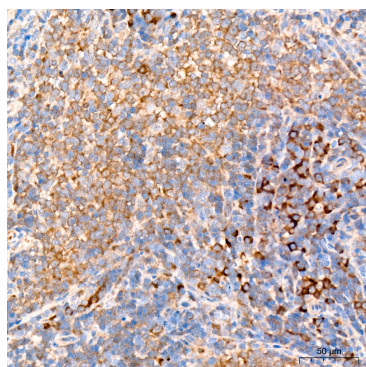
Immunohistochemistry analysis of MIF in paraffin-embedded human breast tissue using MIF Rabbit mAb (A22623) at a dilution of 1:800 (40x lens). High pressure antigen retrieval was performed with 0.01 M citrate buffer (pH 6.0) prior to IHC staining.



Immunohistochemistry analysis of MIF in paraffin-embedded mouse kidney tissue using MIF Rabbit mAb (A22623) at a dilution of 1:800 (40x lens). High pressure antigen retrieval was performed with 0.01 M citrate buffer (pH 6.0) prior to IHC staining.



Immunohistochemistry analysis of MIF in paraffin-embedded rat kidney tissue using MIF Rabbit mAb (A22623) at a dilution of 1:800 (40x lens). High pressure antigen retrieval was performed with 0.01 M citrate buffer (pH 6.0) prior to IHC staining.



Immunohistochemistry analysis of MIF in paraffin-embedded rat spleen tissue using MIF Rabbit mAb (A22623) at a dilution of 1:800 (40x lens). High pressure antigen retrieval was performed with 0.01 M citrate buffer (pH 6.0) prior to IHC staining.