

GSDMA Rabbit mAb

Catalog No.: A22624

Recombinant

1 Publications

Basic Information

Observed MW

49KD

Calculated MW

49kDa

Category

Primary antibody

Applications

ELISA, WB, IF/ICC

Cross-Reactivity

Human

CloneNo number

ARC57560

Background

Predicted to enable phosphatidylinositol-4,5-bisphosphate binding activity; phosphatidylinositol-4-phosphate binding activity; and phosphatidylserine binding activity. Involved in apoptotic process. Located in perinuclear region of cytoplasm.

Recommended Dilutions

WB 1:2000 - 1:5000

IF/ICC 1:50 - 1:200

Immunogen Information

Gene ID

284110

Swiss Prot

Q96QA5

Immunogen

Recombinant fusion protein containing a sequence corresponding to amino acids 61-181 human GSDMA(NP_835465.2).

Synonyms

GSDM; FKSG9; GSDM1; GSDMA

Contact

☎ | 400-999-6126

✉ | cn.market@abclonal.com.cn

🌐 | www.abclonal.com.cn

Product Information

Source

Rabbit

Isotype

IgG

Purification

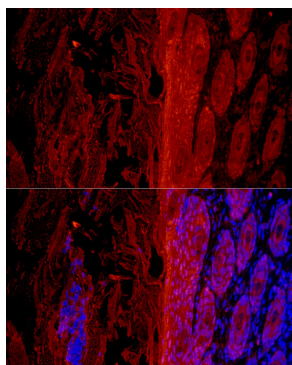
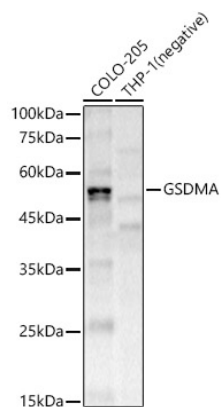
Affinity purification

Storage

Store at -20°C. Avoid freeze / thaw cycles.

Buffer: PBS with 0.05% proclin300, 0.05% BSA, 50% glycerol, pH7.3.

Validation Data



Immunofluorescence analysis of human skin cells using GSDMA Rabbit mAb (A22624) at dilution of 1:100 (40x lens). Blue: DAPI for nuclear staining.