

ABflo® 488 Rabbit anti-Human CD166/ALCAM mAb

Catalog No.: A22633

Basic Information

Observed MW

Calculated MW

65kDa

Category

Primary antibody

Applications

FC

Cross-Reactivity

Human

CloneNo number

ARC57933

Conjugate

ABflo® 488. Ex:491nm. Em:516nm.

Recommended Dilutions

FC 5 µl per 10⁶ cells in
100 µl volume

Background

This gene encodes activated leukocyte cell adhesion molecule (ALCAM), also known as CD166 (cluster of differentiation 166), which is a member of a subfamily of immunoglobulin receptors with five immunoglobulin-like domains (VVC2C2C2) in the extracellular domain. This protein binds to T-cell differentiation antigens CD6, and is implicated in the processes of cell adhesion and migration. Multiple alternatively spliced transcript variants encoding different isoforms have been found.

Immunogen Information

Gene ID

214

Swiss Prot

Q13740

Immunogen

Recombinant protein (or fragment). This information is considered to be commercially sensitive.

Synonyms

MEMD; CD166

Contact

☎ | 400-999-6126

✉ | cn.market@abclonal.com.cn

🌐 | www.abclonal.com.cn

Product Information

Source

Rabbit

Isotype

IgG

Purification

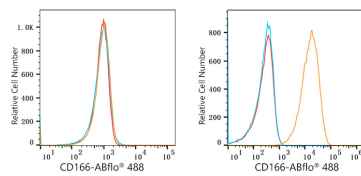
Affinity purification

Storage

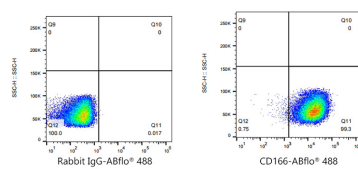
Store at 2-8°C. Avoid freeze.

Buffer: PBS containing 0.2% BSA, preserved with proclin300 or sodium azide (as specified on the Certificate of Analysis), pH 7.3.

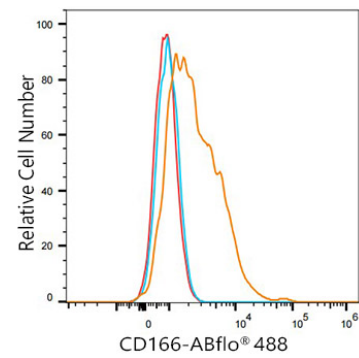
Validation Data



Flow cytometry: 1×10^6 K-562 cells (negative control, Left) and SH-SY5Y cells (Right) were surface-stained with ABflo® 488 Rabbit anti-Human CD166/ALCAM mAb (A22633, 5 μ l/Test, orange line) or ABflo® 488 Rabbit IgG isotype control (A22069, 5 μ l/Test, blue line). Non-fluorescently stained cells were used as blank control (red line).



Flow cytometry: 1×10^6 SH-SY5Y cells were surface-stained with ABflo® 488 Rabbit IgG isotype control (A22069, 5 μ l/Test, left) or ABflo® 488 Rabbit anti-Human CD166/ALCAM mAb (A22633, 5 μ l/Test, right).



Flow cytometry: 1×10^6 Human PBMC were surface-stained with ABflo® 488 Rabbit anti-Human CD166/ALCAM mAb (A22633, 5 μ l/Test, orange line) or ABflo® 488 Rabbit IgG isotype control (A22069, 5 μ l/Test, blue line). Non-fluorescently stained cells were used as blank control (red line).