

[KO Validated] LKB1 Rabbit mAb

Catalog No.: A22636 **KO Validated** **Recombinant** **2 Publications**

Basic Information

Observed MW

49-60kDa

Calculated MW

49kDa

Category

Primary antibody

Applications

WB,IHC-P,IP,ELISA

Cross-Reactivity

Human, Mouse, Rat

CloneNo number

ARC58343

Background

The protein encoded by this gene is a serine/threonine kinase that regulates cell polarity and energy metabolism and functions as a tumor suppressor. Mutations in this gene have been associated with the autosomal dominant Peutz-Jeghers syndrome, as well as with skin, pancreatic, and testicular cancers.

Recommended Dilutions

WB 1:3500 - 1:14000

IHC-P 1:200 - 1:2000

IP 0.5µg-4µg antibody for 200µg-400µg extracts of whole cells

ELISA Recommended starting concentration is 1 µg/mL. Please optimize the concentration based on your specific assay requirements.

Immunogen Information

Gene ID

6794

Swiss Prot

Q15831

Immunogen

Recombinant fusion protein containing a sequence corresponding to amino acids 134-433 of human LKB1. (NP_000446.1).

Synonyms

PJS; LKB1; hLKB1; B1

Contact

☎ | 400-999-6126

✉ | cn.market@abclonal.com.cn

🌐 | www.abclonal.com.cn

Product Information

Source

Rabbit

Isotype

IgG

Purification

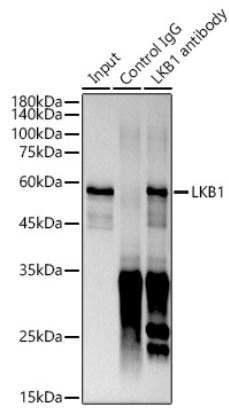
Affinity purification

Storage

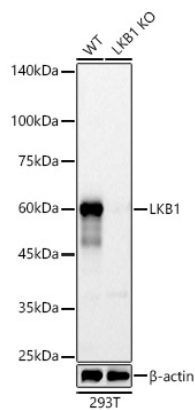
Store at -20°C. Avoid freeze / thaw cycles.

Buffer: PBS with 0.09% Sodium azide,0.05% BSA,50% glycerol,pH7.3.

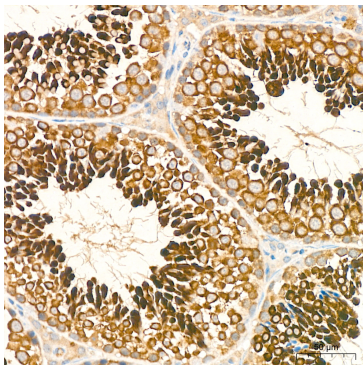
Validation Data



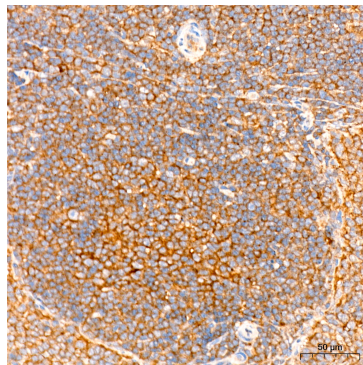
Immunoprecipitation analysis of 300 µg extracts of 293T cells using 3 µg LKB1 antibody (A22636). Western blot was performed from the immunoprecipitate using LKB1 antibody (A22636) at a dilution of 1:7000.



Western blot analysis of lysates from wild type (WT) and LKB1 knockout (KO) 293T cells, using [KO Validated] LKB1 Rabbit mAb (A22636) at 1:7000 dilution. Secondary antibody: HRP-conjugated Goat anti-Rabbit IgG (H+L) (AS014) at 1:10000 dilution. Lysates/proteins: 25 µg per lane. Blocking buffer: 3% nonfat dry milk in TBST. Detection: ECL Basic Kit (RM00020). Exposure time: 60s.



Immunohistochemistry analysis of paraffin-embedded Mouse testis tissue using [KO Validated] LKB1 Rabbit mAb (A22636) at a dilution of 1:200 (40x lens). High pressure antigen retrieval performed with 0.01M Citrate Bufferr (pH 6.0) prior to IHC staining.



Immunohistochemistry analysis of paraffin-embedded Rat spleen tissue using [KO Validated] LKB1 Rabbit mAb (A22636) at a dilution of 1:200 (40x lens). High pressure antigen retrieval performed with 0.01M Citrate Bufferr (pH 6.0) prior to IHC staining.