

# ABflo® 488 Rabbit anti-Human CD21/CR2 mAb

Catalog No.: A22643

## Basic Information

### Observed MW

Refer to figures

### Calculated MW

110kDa/113kDa/118kDa/119kDa

### Category

Primary antibody

### Applications

FC

### Cross-Reactivity

Human

### CloneNo number

ARC56643

### Conjugate

ABflo® 488. Ex:491nm. Em:516nm.

## Recommended Dilutions

FC 5 µl per 10<sup>6</sup> cells in  
100 µl volume

## Background

This gene encodes a membrane protein, which functions as a receptor for Epstein-Barr virus (EBV) binding on B and T lymphocytes. Genetic variations in this gene are associated with susceptibility to systemic lupus erythematosus type 9 (SLEB9). Alternatively spliced transcript variants encoding different isoforms have been found for this gene.

## Immunogen Information

### Gene ID

1380

### Swiss Prot

P20023

### Immunogen

Recombinant protein (or fragment). This information is considered to be commercially sensitive.

### Synonyms

CR; C3DR; CD21; CVID7; SLEB9

## Contact

 | 400-999-6126

 | [cn.market@abclonal.com.cn](mailto:cn.market@abclonal.com.cn)

 | [www.abclonal.com.cn](http://www.abclonal.com.cn)

## Product Information

### Source

Rabbit

### Isotype

IgG

### Purification

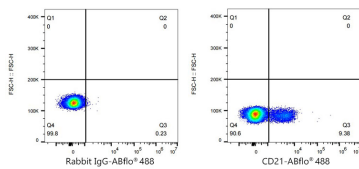
Affinity purification

### Storage

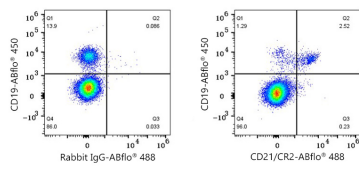
Store at 2-8°C. Avoid freeze.

Buffer: PBS containing 0.2% BSA, preserved with proclin300 or sodium azide (as specified on the Certificate of Analysis), pH 7.3.

## Validation Data



Flow cytometry:  $1 \times 10^6$  Human PBMC were surface-stained with ABflo® 488 Rabbit IgG isotype control (A22069,5  $\mu$ l/Test, left) or ABflo® 488 Rabbit anti-Human CR2/CD21 mAb (A22643,5  $\mu$ l/Test, right).



Flow cytometry:  $1 \times 10^6$  Cynomolgus peripheral blood mononuclear cells were surface-stained with ABflo® 450 Rabbit anti-Human/Monkey CD19 mAb (A27286,5  $\mu$ l/Test) and ABflo® 488 Rabbit IgG isotype control (A22069,5  $\mu$ l/Test, left) or ABflo® 488 Rabbit anti-Human/Monkey CR2/CD21 mAb (A22643,5  $\mu$ l/Test, right). Cells in the lymphocyte gate were used for analysis.