

# [KD Validated] COPB2 Rabbit PolymAb®

Catalog No.: A22646

## Basic Information

### Observed MW

102kDa

### Calculated MW

102kDa

### Category

Primary antibody

### Applications

WB,IF/ICC,ELISA

### Cross-Reactivity

Human,Mouse

## Background

The Golgi coatomer complex (see MIM 601924) constitutes the coat of nonclathrin-coated vesicles and is essential for Golgi budding and vesicular trafficking. It consists of 7 protein subunits, including COPB2.

## Recommended Dilutions

**WB** 1:2000 - 1:20000

**IF/ICC** 1:100 - 1:500

**ELISA** Recommended starting concentration is 1 µg/mL. Please optimize the concentration based on your specific assay requirements.

## Immunogen Information

### Gene ID

9276

### Swiss Prot

P35606

### Immunogen

Recombinant fusion protein containing a sequence corresponding to amino acids 657-906 of human COPB2. (NP\_004757.1).

### Synonyms

OPDD; MCPH19; beta'-COP

## Contact

 | 400-999-6126

 | [cn.market@abclonal.com.cn](mailto:cn.market@abclonal.com.cn)

 | [www.abclonal.com.cn](http://www.abclonal.com.cn)

## Product Information

### Source

Rabbit

### Isotype

IgG

### Purification

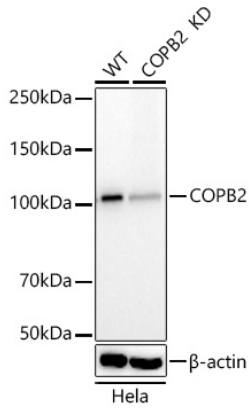
Affinity purification

### Storage

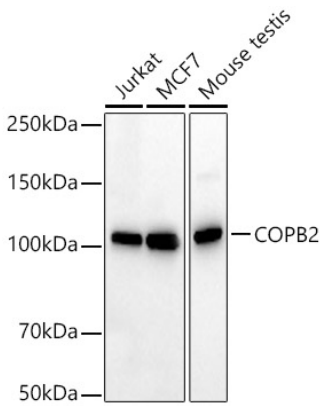
Store at -20°C. Avoid freeze / thaw cycles.

Buffer: PBS with 0.05% proclin300,0.05% BSA,50% glycerol,pH7.3.

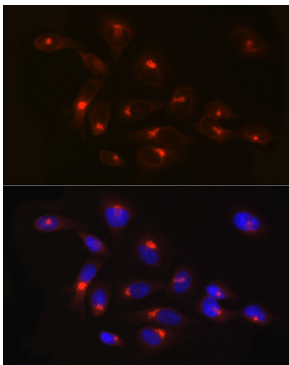
## Validation Data



Western blot analysis of lysates from wild type(WT) and COPB2 knockdown (KD) HeLa cells, using [KD Validated] COPB2 Rabbit PolymAb® (A22646) at 1:20000 dilution.  
Secondary antibody: HRP-conjugated Goat anti-Rabbit IgG (H+L) (AS014) at 1:10000 dilution.  
Lysates/proteins: 25µg per lane.  
Blocking buffer: 3% nonfat dry milk in TBST.  
Detection: ECL Basic Kit (RM00020).  
Exposure time: 10s.



Western blot analysis of various lysates, using [KD Validated] COPB2 Rabbit PolymAb® (A22646) at 1:20000 dilution.  
Secondary antibody: HRP-conjugated Goat anti-Rabbit IgG (H+L) (AS014) at 1:10000 dilution.  
Lysates/proteins: 25µg per lane.  
Blocking buffer: 3% nonfat dry milk in TBST.  
Detection: ECL Basic Kit (RM00020).  
Exposure time: 30s.



Immunofluorescence analysis of HeLa cells using [KD Validated] COPB2 Rabbit PolymAb® (A22646) at dilution of 1:500 (40x lens). Secondary antibody: Cy3-conjugated Goat anti-Rabbit IgG (H+L) (AS007) at 1:500 dilution. Blue: DAPI for nuclear staining.