

# MSH6

Catalog No.: A22652

## Basic Information

### Observed MW

**Calculated MW**  
153kDa

**Category**  
Primary antibody

**Applications**  
IHC-P

**Cross-Reactivity**  
Human

**CloneNo number**  
ARC57727-20230536

## Background

This gene encodes a member of the DNA mismatch repair MutS family. In *E. coli*, the MutS protein helps in the recognition of mismatched nucleotides prior to their repair. A highly conserved region of approximately 150 aa, called the Walker-A adenine nucleotide binding motif, exists in MutS homologs. The encoded protein heterodimerizes with MSH2 to form a mismatch recognition complex that functions as a bidirectional molecular switch that exchanges ADP and ATP as DNA mismatches are bound and dissociated. Mutations in this gene may be associated with hereditary nonpolyposis colon cancer, colorectal cancer, and endometrial cancer. Transcripts variants encoding different isoforms have been described.

## Recommended Dilutions

IHC-P 1:100 - 1:500

## Immunogen Information

<b>Gene ID</b> 2956	<b>Swiss Prot</b> P52701
------------------------	-----------------------------

**Immunogen**  
A synthetic peptide corresponding to a sequence within amino acids 1-100 of human MSH6 (NP\_000170.1).

**Synonyms**  
GTBP; HSAP; p160; GTMBP; MSH-6; HNPCC5; LYNCH5; MMRC53; H6

## Contact

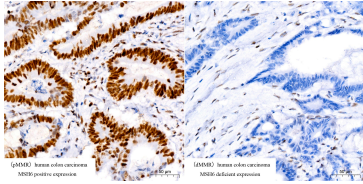
☎		400-999-6126
✉		cn.market@abclonal.com.cn
🌐		www.abclonal.com.cn

## Product Information

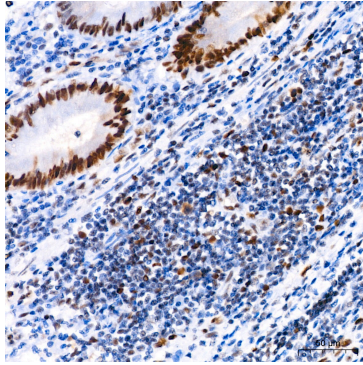
<b>Source</b> Rabbit	<b>Isotype</b> IgG	<b>Purification</b> Affinity purification
-------------------------	-----------------------	--

**Storage**  
Store at -20°C. Avoid freeze / thaw cycles.  
Buffer: PBS with 0.05% proclin300,0.05% BSA,50% glycerol,pH7.3.

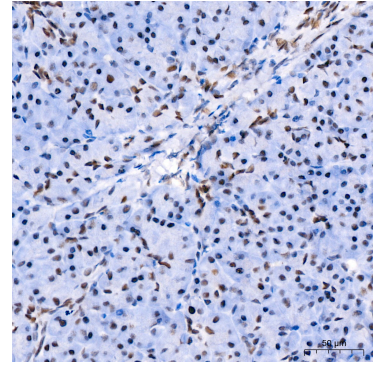
## Validation Data



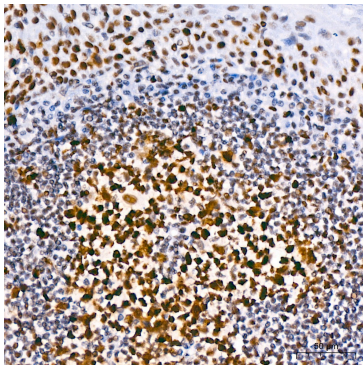
Immunohistochemistry analysis of paraffin-embedded Human colon carcinoma tissue using [KO Validated] MSH6 Rabbit mAb (A22652) at a dilution of 1:400 (40x lens). High pressure antigen retrieval was performed with 0.01 M Tris-EDTA buffer (pH 9.0) prior to IHC staining.



Immunohistochemistry analysis of paraffin-embedded Human appendix tissue using [KO Validated] MSH6 Rabbit mAb (A22652) at a dilution of 1:400 (40x lens). High pressure antigen retrieval was performed with 0.01 M Tris-EDTA buffer (pH 9.0) prior to IHC staining.



Immunohistochemistry analysis of paraffin-embedded Human pancreas tissue using [KO Validated] MSH6 Rabbit mAb (A22652) at a dilution of 1:400 (40x lens). High pressure antigen retrieval was performed with 0.01 M Tris-EDTA buffer (pH 9.0) prior to IHC staining.



Immunohistochemistry analysis of paraffin-embedded Human tonsil tissue using [KO Validated] MSH6 Rabbit mAb (A22652) at a dilution of 1:400 (40x lens). High pressure antigen retrieval was performed with 0.01 M Tris-EDTA buffer (pH 9.0) prior to IHC staining.