

# FUNDC1 Rabbit mAb

Catalog No.: A22656 **Recombinant** **1 Publications**

## Basic Information

### Observed MW

Refer to figures

### Calculated MW

17kDa

### Category

Primary antibody

### Applications

ELISA,IHC-P

### Cross-Reactivity

Rat

### CloneNo number

ARC57663

## Background

This gene encodes a protein with a FUN14 superfamily domain. The function of the encoded protein is not known.

## Recommended Dilutions

IHC-P 1:100 - 1:500

## Immunogen Information

### Gene ID

139341

### Swiss Prot

Q8IVP5

### Immunogen

A synthetic peptide corresponding to a sequence within amino acids 50-150 of human FUNDC1. (NP\_776155.1).

### Synonyms

FUNDC1

## Contact

 | 400-999-6126

 | [cn.market@abclonal.com.cn](mailto:cn.market@abclonal.com.cn)

 | [www.abclonal.com.cn](http://www.abclonal.com.cn)

## Product Information

### Source

Rabbit

### Isotype

IgG

### Purification

Affinity purification

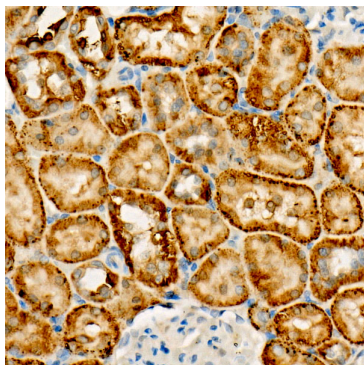
### Storage

Store at -20°C. Avoid freeze / thaw cycles.

Buffer: PBS with 0.05% proclin300,0.05% BSA,,50% glycerol,pH7.3.

## Validation Data

---



Immunohistochemistry analysis of paraffin-embedded Rat kidney using FUNDCl Rabbit mAb (A22656) at dilution of 1:300 (40x lens). High pressure antigen retrieval performed with 0.01M Citrate Bufferr (pH 6.0) prior to IHC staining.