

Endomucin Rabbit mAb

Catalog No.: A22662 **Recombinant**

Basic Information

Observed MW

Refer to figures

Calculated MW

27kDa

Category

Primary antibody

Applications

ELISA, IHC-P

Cross-Reactivity

Mouse

CloneNo number

ARC57749

Background

EMCN is a mucin-like sialoglycoprotein that interferes with the assembly of focal adhesion complexes and inhibits interaction between cells and the extracellular matrix (Kinoshita et al., 2001 [PubMed 11418125]).

Recommended Dilutions

IHC-P 1:100 - 1:500

Immunogen Information

Gene ID

51705

Swiss Prot

Q9ULC0

Immunogen

A synthetic peptide corresponding to a sequence within amino acids 212-261 of human Endomucin (NP_057326.2).

Synonyms

EMCN2; MUC14; Endomucin

Contact

☎ | 400-999-6126

✉ | cn.market@abclonal.com.cn

🌐 | www.abclonal.com.cn

Product Information

Source

Rabbit

Isotype

IgG

Purification

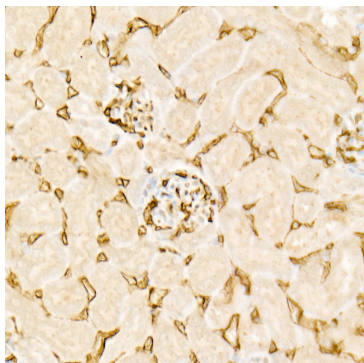
Affinity purification

Storage

Store at -20°C. Avoid freeze / thaw cycles.

Buffer: PBS with 0.05% proclin300, 0.05% BSA, 50% glycerol, pH7.3.

Validation Data



Immunohistochemistry analysis of paraffin-embedded Mouse kidney using Endomucin Rabbit mAb (A22662) at dilution of 1:300 (40x lens). High pressure antigen retrieval performed with 0.01M Citrate Bufferr (pH 6.0) prior to IHC staining.