

RB Rabbit mAb

Catalog No.: A22663 **Recombinant**

Basic Information

Observed MW

Refer to figures

Calculated MW

106kDa

Category

Primary antibody

Applications

ELISA, IHC-P

Cross-Reactivity

Mouse, Rat

CloneNo number

ARC57809

Background

The protein encoded by this gene is a negative regulator of the cell cycle and was the first tumor suppressor gene found. The encoded protein also stabilizes constitutive heterochromatin to maintain the overall chromatin structure. The active, hypophosphorylated form of the protein binds transcription factor E2F1. Defects in this gene are a cause of childhood cancer retinoblastoma (RB), bladder cancer, and osteogenic sarcoma.

Recommended Dilutions

IHC-P 1:50 - 1:200

Immunogen Information

Gene ID

5925

Swiss Prot

P06400

Immunogen

A synthetic peptide corresponding to a sequence within amino acids 750-850 of human RB1 (NP_000312.2).

Synonyms

RB; pRb; OSRC; pp110; p105-Rb; PPP1R130; p110-RB1

Contact

☎ | 400-999-6126

✉ | cn.market@abclonal.com.cn

🌐 | www.abclonal.com.cn

Product Information

Source

Rabbit

Isotype

IgG

Purification

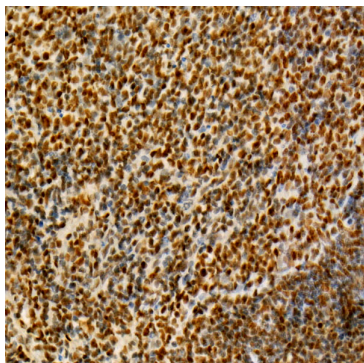
Affinity purification

Storage

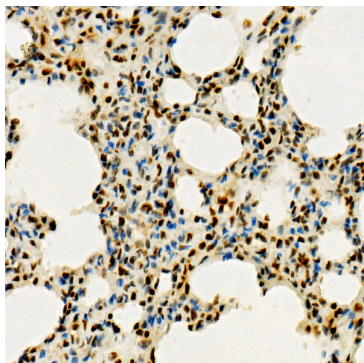
Store at -20°C. Avoid freeze / thaw cycles.

Buffer: PBS with 0.05% proclin300, 0.05% BSA, 50% glycerol, pH7.3.

Validation Data



Immunohistochemistry analysis of paraffin-embedded mouse spleen using RB Rabbit mAb (A22663) at dilution of 1:200 (40x lens). Perform high pressure antigen retrieval with 10 mM citrate buffer pH 6.0 before commencing with IHC staining protocol.



Immunohistochemistry analysis of paraffin-embedded rat lung using RB Rabbit mAb (A22663) at dilution of 1:200 (40x lens). Perform high pressure antigen retrieval with 10 mM citrate buffer pH 6.0 before commencing with IHC staining protocol.