

COL4A6 Rabbit pAb

Catalog No.: A22673

Basic Information

Observed MW

170-185kDa

Calculated MW

164kDa

Category

Primary antibody

Applications

ELISA, WB

Cross-Reactivity

Rat

Background

This gene encodes one of the six subunits of type IV collagen, the major structural component of basement membranes. Like the other members of the type IV collagen gene family, this gene is organized in a head-to-head conformation with another type IV collagen gene, alpha 5 type IV collagen, so that the gene pair shares a common promoter. Deletions in the alpha 5 gene that extend into the alpha 6 gene result in diffuse leiomyomatosis accompanying the X-linked Alport syndrome caused by the deletion in the alpha 5 gene. Alternative splicing results in multiple transcript variants encoding different isoforms.

Recommended Dilutions

WB 1:100 - 1:500

Immunogen Information

Gene ID

1288

Swiss Prot

Q14031

Immunogen

Recombinant fusion protein containing a sequence corresponding to amino acids 1575-1691 of human COL4A6. (NP_001838.2).

Synonyms

DFNX6; DELXq22.3; CXDELq22.3; COL4A6

Contact

☎ | 400-999-6126

✉ | cn.market@abclonal.com.cn

🌐 | www.abclonal.com.cn

Product Information

Source

Rabbit

Isotype

IgG

Purification

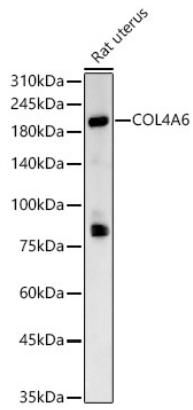
Affinity purification

Storage

Store at -20°C. Avoid freeze / thaw cycles.

Buffer: PBS with 0.05% proclin300, 50% glycerol, pH7.3.

Validation Data



Western blot analysis of lysates from Rat uterus, using COL4A6 Rabbit pAb (A22673) at 1:400 dilution.
Secondary antibody: HRP Goat Anti-Rabbit IgG (H+L) (AS014) at 1:10000 dilution.
Lysates/proteins: 25µg per lane.
Blocking buffer: 3% nonfat dry milk in TBST.
Detection: ECL Basic Kit (RM00020).
Exposure time: 90s.