

RELA Rabbit pAb

Catalog No.: A22676 **1 Publications**

Basic Information

Observed MW

65kDa

Calculated MW

60kDa

Category

Primary antibody

Applications

ELISA,WB,IF/ICC

Cross-Reactivity

Human, Mouse

Background

Enables several functions, including DNA-binding transcription factor activity, RNA polymerase II-specific; actinin binding activity; and ankyrin repeat binding activity. Involved in several processes, including negative regulation of protein sumoylation; postsynapse to nucleus signaling pathway; and regulation of transcription, DNA-templated. Acts upstream of or within several processes, including cellular response to hepatocyte growth factor stimulus; cellular response to lipopolysaccharide; and positive regulation of interleukin-12 production. Located in several cellular components, including chromatin; cytosol; and glutamatergic synapse. Is expressed in several structures, including alimentary system; early conceptus; genitourinary system; musculature; and skin. Human ortholog(s) of this gene implicated in ductal carcinoma in situ; lung non-small cell carcinoma; lymphoma; and renal cell carcinoma. Orthologous to human RELA (RELA proto-oncogene, NF-kB subunit).

Recommended Dilutions

WB	1:500 - 1:1000
IF/ICC	1:50 - 1:200

Immunogen Information

Gene ID

19697

Swiss Prot

Q04207

Immunogen

Recombinant fusion protein containing a sequence corresponding to amino acids 400-500 of mouse RELA. (NP_033071.1).

Synonyms

p65; p65 NFkB; p65 NF-kappa B; RELA

Contact

 | 400-999-6126

 | cn.market@abclonal.com.cn

 | www.abclonal.com.cn

Product Information

Source

Rabbit

Isotype

IgG

Purification

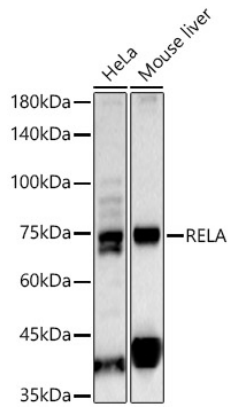
Affinity purification

Storage

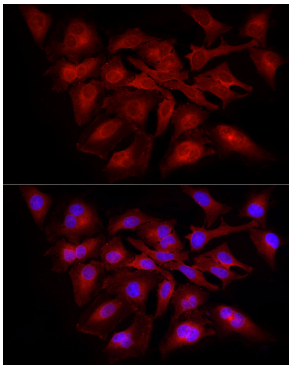
Store at -20°C. Avoid freeze / thaw cycles.

Buffer: PBS with 0.05% proclin300,50% glycerol,pH7.3.

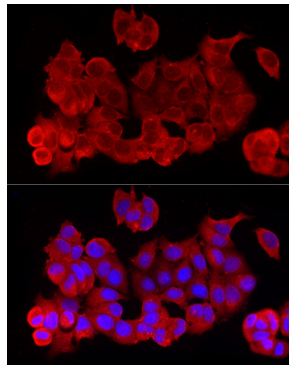
Validation Data



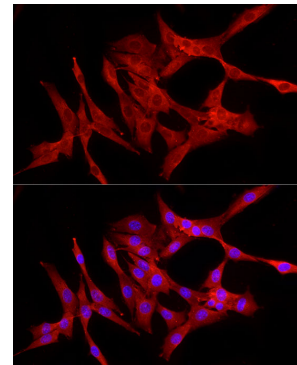
Western blot analysis of various lysates, using RELA Rabbit pAb (A22676) at 1:700 dilution.
Secondary antibody: HRP Goat Anti-Rabbit IgG (H+L) (AS014) at 1:10000 dilution.
Lysates/proteins: 25ug per lane.
Blocking buffer: 3% nonfat dry milk in TBST.
Detection: ECL Basic Kit (RM00020).
Exposure time: 20s.



Immunofluorescence analysis of HeLa cells using RELA Rabbit pAb (A22676) at dilution of 1:100 (40x lens). Secondary antibody: Cy3 Goat Anti-Rabbit IgG (H+L) (AS007) at 1:500 dilution. Blue: DAPI for nuclear staining.



Immunofluorescence analysis of MCF7 cells using RELA Rabbit pAb (A22676) at dilution of 1:100 (40x lens). Secondary antibody: Cy3 Goat Anti-Rabbit IgG (H+L) (AS007) at 1:500 dilution. Blue: DAPI for nuclear staining.



Immunofluorescence analysis of NIH/3T3 cells using RELA Rabbit pAb (A22676) at dilution of 1:100 (40x lens). Secondary antibody: Cy3 Goat Anti-Rabbit IgG (H+L) (AS007) at 1:500 dilution. Blue: DAPI for nuclear staining.