

# Siglec1 Rabbit pAb

Catalog No.: A22677

## Basic Information

### Observed MW

200kDa

### Calculated MW

183kDa

### Category

Primary antibody

### Applications

WB, ELISA

### Cross-Reactivity

Rat

## Background

Predicted to enable virion binding activity. Acts upstream of or within positive regulation of T cell apoptotic process and positive regulation of extrinsic apoptotic signaling pathway. Predicted to be located in extracellular region and membrane. Predicted to be integral component of membrane. Predicted to be active in early endosome; late endosome; and plasma membrane. Is expressed in immune system; reproductive system; and skin. Orthologous to human SIGLEC1 (sialic acid binding Ig like lectin 1).

## Recommended Dilutions

**WB** 1:500 - 1:1000

**ELISA** Recommended starting concentration is 1 µg/mL. Please optimize the concentration based on your specific assay requirements.

## Immunogen Information

### Gene ID

20612

### Swiss Prot

Q62230

### Immunogen

Recombinant protein (or fragment). This information is considered to be commercially sensitive.

### Synonyms

Sn; Cd169; Siglec-1; Siglec1

## Contact

☎ | 400-999-6126

✉ | [cn.market@abclonal.com.cn](mailto:cn.market@abclonal.com.cn)

🌐 | [www.abclonal.com.cn](http://www.abclonal.com.cn)

## Product Information

### Source

Rabbit

### Isotype

IgG

### Purification

Affinity purification

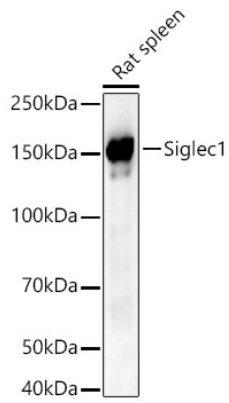
### Storage

Store at -20°C. Avoid freeze / thaw cycles.

Buffer: PBS containing 50% glycerol, preserved with proclin300 or sodium azide (as specified on the Certificate of Analysis), pH 7.3.

## Validation Data

---



Western blot analysis of lysates from Rat spleen using Siglec1 Rabbit pAb (A22677) at 1:700 dilution.  
Secondary antibody: HRP-conjugated Goat anti-Rabbit IgG (H+L) (AS014) at 1:10000 dilution.  
Lysates/proteins: 25 µg per lane.  
Blocking buffer: 3% nonfat dry milk in TBST.  
Detection: ECL Basic Kit (RM00020).  
Exposure time: 90s.