

Glucagon Rabbit mAb

Catalog No.: A22702 **Recombinant**

Basic Information

Observed MW

20kDa

Calculated MW

21kDa

Category

Primary antibody

Applications

ELISA, WB, IHC-P, IF/ICC

Cross-Reactivity

Human, Mouse, Rat

CloneNo number

ARC56934

Background

The protein encoded by this gene is actually a preproprotein that is cleaved into four distinct mature peptides. One of these, glucagon, is a pancreatic hormone that counteracts the glucose-lowering action of insulin by stimulating glycogenolysis and gluconeogenesis. Glucagon is a ligand for a specific G-protein linked receptor whose signalling pathway controls cell proliferation. Two of the other peptides are secreted from gut endocrine cells and promote nutrient absorption through distinct mechanisms. Finally, the fourth peptide is similar to glicentin, an active enteroglucagon.

Recommended Dilutions

WB	1:2000 - 1:6000
IHC-P	1:10000 - 1:40000
IF/ICC	1:1000 - 1:5000

Immunogen Information

Gene ID

2641

Swiss Prot

P01275

Immunogen

A synthetic peptide corresponding to a sequence within amino acids 21-120 of human Glucagon (NP_002045.1).

Synonyms

GLP1; GLP2; GRPP; GLP-1; Glucagon

Contact

☎ | 400-999-6126

✉ | cn.market@abclonal.com.cn

🌐 | www.abclonal.com.cn

Product Information

Source

Rabbit

Isotype

IgG

Purification

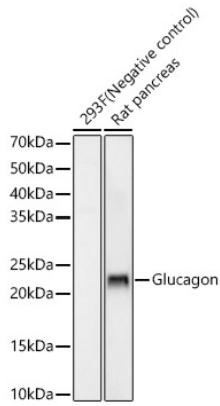
Affinity purification

Storage

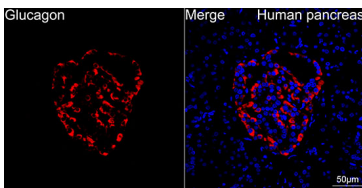
Store at -20°C. Avoid freeze / thaw cycles.

Buffer: PBS with 0.05% proclin300, 0.05% BSA, 50% glycerol, pH7.3.

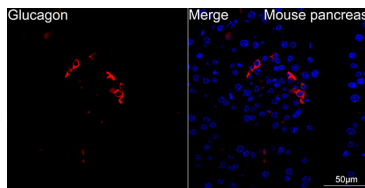
Validation Data



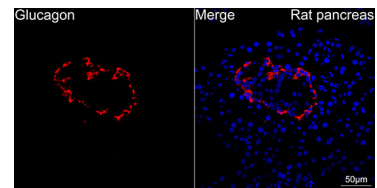
Western blot analysis of various lysates, using Glucagon Rabbit mAb (A22702) at 1:5000 dilution.
Secondary antibody: HRP Goat Anti-Rabbit IgG (H+L) (AS014) at 1:10000 dilution.
Lysates/proteins: 25µg per lane.
Blocking buffer: 3% nonfat dry milk in TBST.
Detection: ECL Enhanced Kit (RM00021).
Exposure time: 180s.



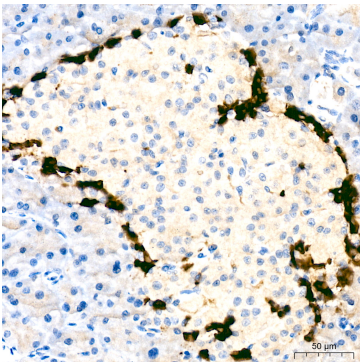
Confocal imaging of human pancreas using Glucagon Rabbit mAb (A22702, dilution 1:1500)(Red). DAPI was used for nuclear staining (blue). Objective: 60x.



Confocal imaging of mouse pancreas using Glucagon Rabbit mAb (A22702, dilution 1:1500)(Red). DAPI was used for nuclear staining (blue). Objective: 60x.



Confocal imaging of rat pancreas using Glucagon Rabbit mAb (A22702, dilution 1:1500)(Red). DAPI was used for nuclear staining (blue). Objective: 60x.



Immunohistochemistry analysis of Glucagon in paraffin-embedded Human pancreas using Glucagon Rabbit mAb (A22702) at dilution of 1:35000 (40x lens). Perform high pressure antigen retrieval with 10 mM Tris/EDTA buffer pH 9.0 before commencing with IHC staining protocol.