

ATAD3A/ATAD3B Rabbit pAb

Catalog No.: A22703

Basic Information

Observed MW

68kDa

Calculated MW

71/73kDa

Category

Primary antibody

Applications

ELISA, WB, IF/ICC

Cross-Reactivity

Human, Mouse, Rat

Background

The protein encoded by this gene is localized to the mitochondrial inner membrane, where it can bind to a highly-related protein, ATAD3A. ATAD3A appears to interact with matrix nucleoid complexes, and the encoded protein negatively regulates that interaction. This gene is expressed almost exclusively in pluripotent embryonic stem cells and some cancer cells. Two transcript variants encoding different isoforms have been found for this gene.

Recommended Dilutions

WB	1:500 - 1:1000
IF/ICC	1:50 - 1:200

Immunogen Information

Gene ID

55210/83858

Swiss Prot

Q9NVI7/Q5T9A4

Immunogen

Recombinant fusion protein containing a sequence corresponding to amino acids 1-240 of human ATAD3B (NP_114127.3).

Synonyms

TOB3; AAA-TOB3; ATAD3A/ATAD3B

Contact

☎ | 400-999-6126

✉ | cn.market@abclonal.com.cn

🌐 | www.abclonal.com.cn

Product Information

Source

Rabbit

Isotype

IgG

Purification

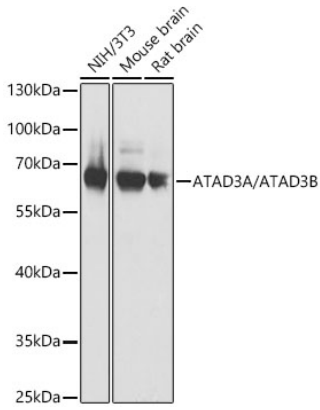
Affinity purification

Storage

Store at -20°C. Avoid freeze / thaw cycles.

Buffer: PBS with 0.02% sodium azide, 50% glycerol, pH7.3.

Validation Data



Western blot analysis of extracts of various lysates, using ATAD3A/ATAD3B antibody (A22703) at 1:1000 dilution.

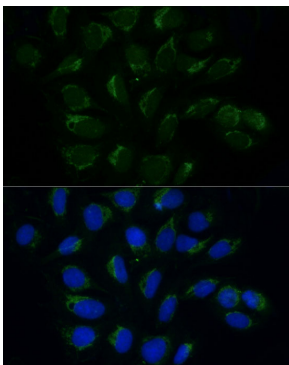
Secondary antibody: HRP Goat Anti-Rabbit IgG (H+L) (AS014) at 1:10000 dilution.

Lysates/proteins: 25µg per lane.

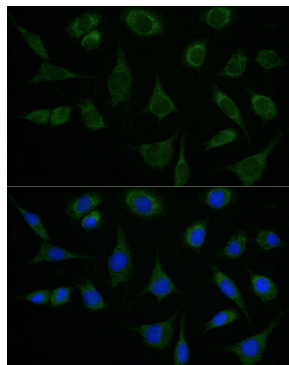
Blocking buffer: 3% nonfat dry milk in TBST.

Detection: ECL Basic Kit (RM00020).

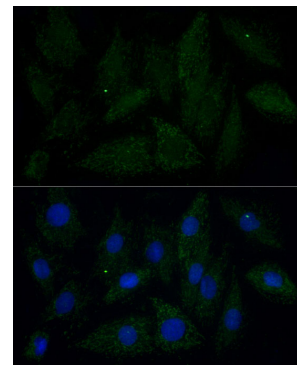
Exposure time: 1s.



Immunofluorescence analysis of U2OS cells using ATAD3A/ATAD3B antibody (A22703) at dilution of 1:100 (40x lens). Blue: DAPI for nuclear staining.



Immunofluorescence analysis of L929 cells using ATAD3A/ATAD3B antibody (A22703) at dilution of 1:100 (40x lens). Blue: DAPI for nuclear staining.



Immunofluorescence analysis of H9C2 cells using ATAD3A/ATAD3B antibody (A22703) at dilution of 1:100 (40x lens). Blue: DAPI for nuclear staining.