

[KD Validated] Integrin alpha 5 (ITGA5/CD49e) Rabbit mAb

Catalog No.: A22706 **Recombinant**

Basic Information

Observed MW

150kDa

Calculated MW

115kDa

Category

Primary antibody

Applications

ELISA, WB

Cross-Reactivity

Human

CloneNo number

ARC58291

Background

The product of this gene belongs to the integrin alpha chain family. Integrins are heterodimeric integral membrane proteins composed of an alpha subunit and a beta subunit that function in cell surface adhesion and signaling. The encoded preproprotein is proteolytically processed to generate light and heavy chains that comprise the alpha 5 subunit. This subunit associates with the beta 1 subunit to form a fibronectin receptor. This integrin may promote tumor invasion, and higher expression of this gene may be correlated with shorter survival time in lung cancer patients. Note that the integrin alpha 5 and integrin alpha V subunits are encoded by distinct genes.

Recommended Dilutions

WB 1:500 - 1:1000

Immunogen Information

Gene ID

3678

Swiss Prot

P08648

Immunogen

Recombinant fusion protein containing a sequence corresponding to amino acids 42-995 of human Integrin alpha 5 (ITGA5/CD49e). (NP_002196.4).

Synonyms

FNRA; CD49e; VLA-5; VLA5A; [KD Validated] Integrin alpha 5 (ITGA5/CD49e)

Contact

 | 400-999-6126 | cn.market@abclonal.com.cn | www.abclonal.com.cn

Product Information

Source

Rabbit

Isotype

IgG

Purification

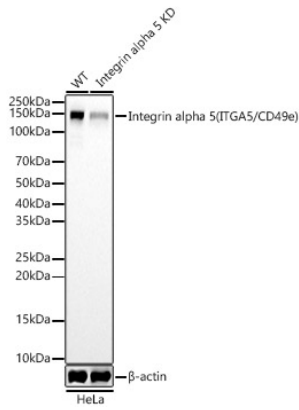
Affinity purification

Storage

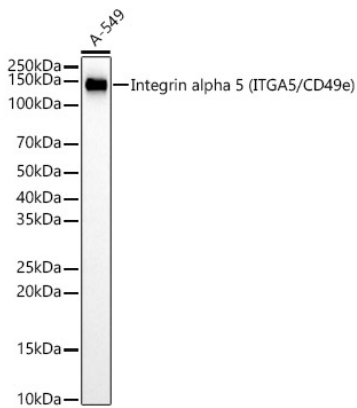
Store at -20°C. Avoid freeze / thaw cycles.

Buffer: PBS with 0.05% proclin300, 0.05% BSA, 50% glycerol, pH7.3.

Validation Data



Western blot analysis of lysates from wild type(WT) and Integrin alpha 5 (ITGA5/CD49e) knockdown (KD) HeLa cells, using [KD Validated] Integrin alpha 5 (ITGA5/CD49e) Rabbit mAb (A22706) at 1:1000 dilution. Secondary antibody: HRP Goat Anti-Rabbit IgG (H+L) (AS014) at 1:10000 dilution. Lysates/proteins: 25µg per lane. Blocking buffer: 3% nonfat dry milk in TBST. Detection: ECL Basic Kit (RM00020). Exposure time: 60s.



Western blot analysis of lysates from A-549 cells, using [KD Validated] Integrin alpha 5 (ITGA5/CD49e) Rabbit mAb (A22706) at 1:1000 dilution. Secondary antibody: HRP Goat Anti-Rabbit IgG (H+L) (AS014) at 1:10000 dilution. Lysates/proteins: 25µg per lane. Blocking buffer: 3% nonfat dry milk in TBST. Detection: ECL Basic Kit (RM00020). Exposure time: 60s.