

# CBX1/HP1 beta Rabbit mAb

Catalog No.: A22708 **Recombinant**

## Basic Information

### Observed MW

25kDa

### Calculated MW

21kDa

### Category

Primary antibody

### Applications

ELISA, WB, IHC-P

### Cross-Reactivity

Human, Mouse, Rat

### CloneNo number

ARC58489

## Background

This gene encodes a highly conserved nonhistone protein, which is a member of the heterochromatin protein family. The protein is enriched in the heterochromatin and associated with centromeres. The protein has a single N-terminal chromodomain which can bind to histone proteins via methylated lysine residues, and a C-terminal chromo shadow-domain (CSD) which is responsible for the homodimerization and interaction with a number of chromatin-associated nonhistone proteins. The protein may play an important role in the epigenetic control of chromatin structure and gene expression. Several related pseudogenes are located on chromosomes 1, 3, and X. Multiple alternatively spliced variants, encoding the same protein, have been identified.

## Recommended Dilutions

<b>WB</b>	1:2000 - 1:10000
<b>IHC-P</b>	1:100 - 1:500

## Immunogen Information

### Gene ID

10951

### Swiss Prot

P83916

### Immunogen

Recombinant fusion protein containing a sequence corresponding to amino acids 1-100 of human CBX1/HP1 beta. (NP\_006798.1).

### Synonyms

CBX; M31; MOD1; p25beta; HP1-BETA; HP1Hsbeta; HP1Hs-beta; CBX1/HP1 beta

## Contact

☎ | 400-999-6126

✉ | [cn.market@abclonal.com.cn](mailto:cn.market@abclonal.com.cn)

🌐 | [www.abclonal.com.cn](http://www.abclonal.com.cn)

## Product Information

### Source

Rabbit

### Isotype

IgG

### Purification

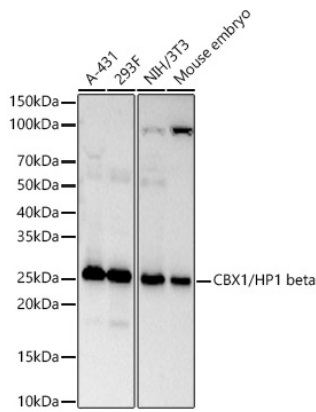
Affinity purification

### Storage

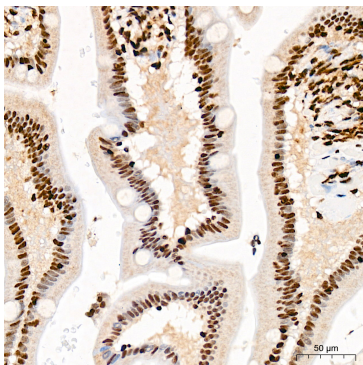
Store at -20°C. Avoid freeze / thaw cycles.

Buffer: PBS with 0.05% proclin300, 0.05% BSA, 50% glycerol, pH7.3.

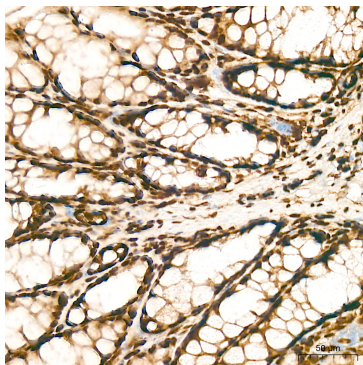
## Validation Data



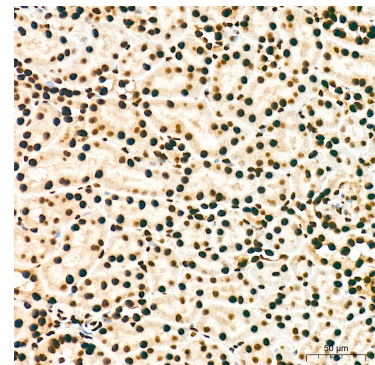
Western blot analysis of various lysates, using CBX1/HP1 beta Rabbit mAb (A22708) at 1:9000 dilution. Secondary antibody: HRP Goat Anti-Rabbit IgG (H+L) (AS014) at 1:10000 dilution. Lysates/proteins: 25µg per lane. Blocking buffer: 3% nonfat dry milk in TBST. Detection: ECL Basic Kit (RM00020). Exposure time: 60s.



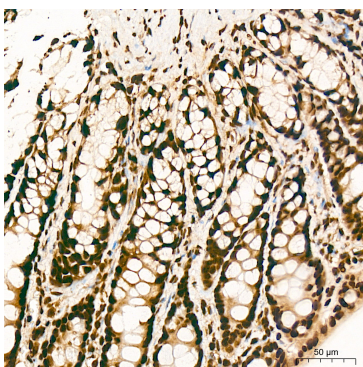
Immunohistochemistry analysis of paraffin-embedded Human small intestine tissue using CBX1/HP1 beta Rabbit mAb (A22708) at a dilution of 1:400 (40x lens). High pressure antigen retrieval was performed with 0.01 M citrate buffer (pH 6.0) prior to IHC staining.



Immunohistochemistry analysis of paraffin-embedded Mouse colon tissue using CBX1/HP1 beta Rabbit mAb (A22708) at a dilution of 1:400 (40x lens). High pressure antigen retrieval was performed with 0.01 M citrate buffer (pH 6.0) prior to IHC staining.



Immunohistochemistry analysis of paraffin-embedded Mouse kidney tissue using CBX1/HP1 beta Rabbit mAb (A22708) at a dilution of 1:400 (40x lens). High pressure antigen retrieval was performed with 0.01 M citrate buffer (pH 6.0) prior to IHC staining.



Immunohistochemistry analysis of paraffin-embedded Rat colon tissue using CBX1/HP1 beta Rabbit mAb (A22708) at a dilution of 1:400 (40x lens). High pressure antigen retrieval was performed with 0.01 M citrate buffer (pH 6.0) prior to IHC staining.