

# FRS2 Rabbit mAb

Catalog No.: A22712 **Recombinant**

## Basic Information

### Observed MW

80kDa

### Calculated MW

57kDa

### Category

Primary antibody

### Applications

ELISA, WB, IHC-P, IF/ICC

### Cross-Reactivity

Human, Mouse, Rat

### CloneNo number

ARC57138

## Background

Enables fibroblast growth factor receptor binding activity and neurotrophin TRKA receptor binding activity. Involved in negative regulation of cardiac muscle cell differentiation. Acts upstream of or within fibroblast growth factor receptor signaling pathway. Located in adherens junction. Biomarker of renal cell carcinoma.

## Recommended Dilutions

<b>WB</b>	1:500 - 1:1000
<b>IHC-P</b>	1:50 - 1:200
<b>IF/ICC</b>	1:100 - 1:500

## Immunogen Information

### Gene ID

10818

### Swiss Prot

Q8WU20

### Immunogen

Recombinant protein of human FRS2.

### Synonyms

SNT; SNT1; FRS1A; FRS2A; SNT-1; FRS2alpha; FRS2

## Contact

 | 400-999-6126

 | [cn.market@abclonal.com.cn](mailto:cn.market@abclonal.com.cn)

 | [www.abclonal.com.cn](http://www.abclonal.com.cn)

## Product Information

### Source

Rabbit

### Isotype

IgG

### Purification

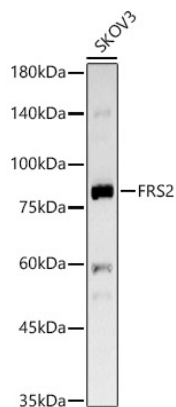
Affinity purification

### Storage

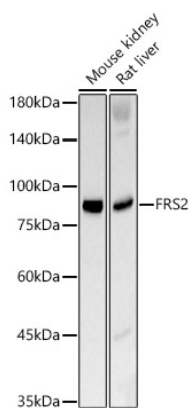
Store at -20°C. Avoid freeze / thaw cycles.

Buffer: PBS with 0.05% proclin300, 0.05% BSA, 50% glycerol, pH7.3.

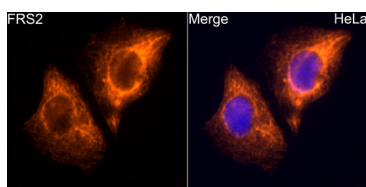
## Validation Data



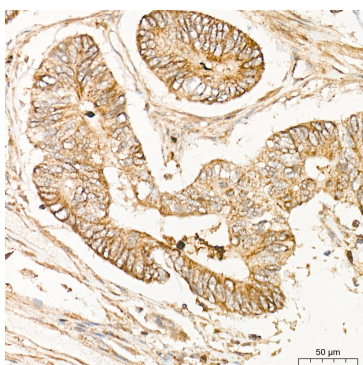
Western blot analysis of lysates from SKOV3 cells, using FRS2 Rabbit mAb (A22712) at 1:1000 dilution. Secondary antibody: HRP Goat Anti-Rabbit IgG (H+L) (AS014) at 1:10000 dilution. Lysates/proteins: 25µg per lane. Blocking buffer: 3% nonfat dry milk in TBST. Detection: ECL Basic Kit (RM00020). Exposure time: 90s.



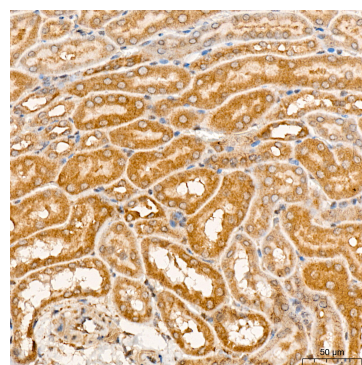
Western blot analysis of various lysates, using FRS2 Rabbit mAb (A22712) at 1:1000 dilution. Secondary antibody: HRP Goat Anti-Rabbit IgG (H+L) (AS014) at 1:10000 dilution. Lysates/proteins: 25µg per lane. Blocking buffer: 3% nonfat dry milk in TBST. Detection: ECL Basic Kit (RM00020). Exposure time: 3s.



Immunofluorescence analysis of HeLa cells using FRS2 Rabbit mAb (A22712) at dilution of 1:400 (40x lens). Secondary antibody: Cy3 Goat Anti-Rabbit IgG (H+L) (AS007) at 1:500 dilution. Blue: DAPI for nuclear staining.



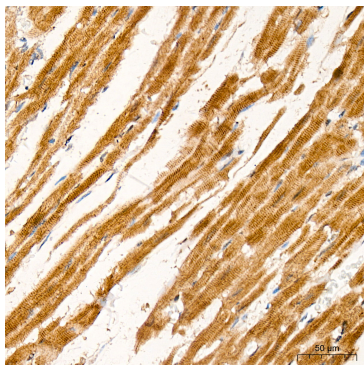
Immunohistochemistry analysis of FRS2 in paraffin-embedded human colon tissue using FRS2 Rabbit mAb (A22712) at a dilution of 1:200 (40x lens). High pressure antigen retrieval was performed with 0.01 M citrate buffer (pH 6.0) prior to IHC staining.



Immunohistochemistry analysis of FRS2 in paraffin-embedded mouse kidney tissue using FRS2 Rabbit mAb (A22712) at a dilution of 1:200 (40x lens). High pressure antigen retrieval was performed with 0.01 M citrate buffer (pH 6.0) prior to IHC staining.

## Validation Data

---



Immunohistochemistry analysis of FRS2 in paraffin-embedded rat heart tissue using FRS2 Rabbit mAb (A22712) at a dilution of 1:200 (40x lens). High pressure antigen retrieval was performed with 0.01 M citrate buffer (pH 6.0) prior to IHC staining.