

ATF2 Rabbit mAb

Catalog No.: A22718 **Recombinant** **1 Publications**

Basic Information

Observed MW

74kDa

Calculated MW

55kDa

Category

Primary antibody

Applications

ELISA, WB, IHC-P, IP

Cross-Reactivity

Human, Mouse, Rat

CloneNo number

ARC55522

Background

This gene encodes a transcription factor that is a member of the leucine zipper family of DNA binding proteins. The encoded protein has been identified as a moonlighting protein based on its ability to perform mechanistically distinct functions. This protein binds to the cAMP-responsive element (CRE), an octameric palindrome. It forms a homodimer or a heterodimer with c-Jun and stimulates CRE-dependent transcription. This protein is also a histone acetyltransferase (HAT) that specifically acetylates histones H2B and H4 in vitro; thus it may represent a class of sequence-specific factors that activate transcription by direct effects on chromatin components. The encoded protein may also be involved in cell's DNA damage response independent of its role in transcriptional regulation. Several alternatively spliced transcript variants have been found for this gene.

Recommended Dilutions

WB 1:10000 - 1:70000

IHC-P 1:100 - 1:500

IP 0.5µg-4µg antibody for
200µg-400µg extracts of
whole cells

Immunogen Information

Gene ID

1386

Swiss Prot

P15336

Immunogen

Recombinant fusion protein containing a sequence corresponding to amino acids 1-340 of human ATF2 (NP_001871.2).

Synonyms

HB16; CREB2; TREB7; CREB-2; CRE-BP1; ATF2

Contact

☎ | 400-999-6126

✉ | cn.market@abclonal.com.cn

🌐 | www.abclonal.com.cn

Product Information

Source

Rabbit

Isotype

IgG

Purification

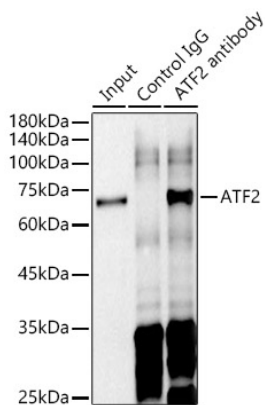
Affinity purification

Storage

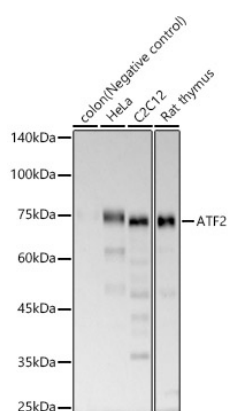
Store at -20°C. Avoid freeze / thaw cycles.

Buffer: PBS with 0.05% proclin300, 0.05% BSA, 50% glycerol, pH7.3.

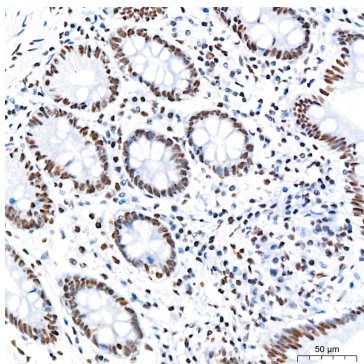
Validation Data



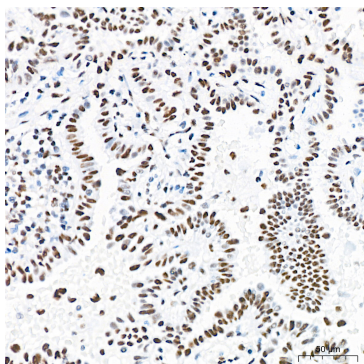
Immunoprecipitation analysis of 300 µg extracts of 293T cells using 3 µg ATF2 antibody (A22718). Western blot was performed from the immunoprecipitate using ATF2 antibody (A22718) at a dilution of 1:60000.



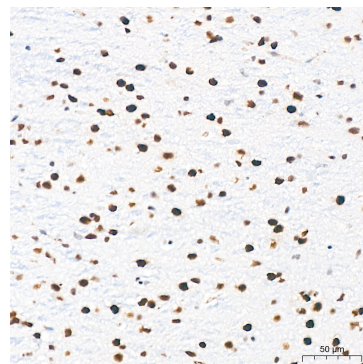
Western blot analysis of various lysates, using ATF2 Rabbit mAb (A22718) at 1:60000 dilution. Secondary antibody: HRP Goat Anti-Rabbit IgG (H+L) (AS014) at 1:10000 dilution. Lysates/proteins: 25µg per lane. Blocking buffer: 3% nonfat dry milk in TBST. Detection: ECL Basic Kit (RM00020). Exposure time: 180s.



Immunohistochemistry analysis of ATF2 in paraffin-embedded Human colon tissue using ATF2 Rabbit mAb (A22718) at a dilution of 1:500 (40x lens). High pressure antigen retrieval was performed with 0.01 M citrate buffer (pH 6.0) prior to IHC staining.

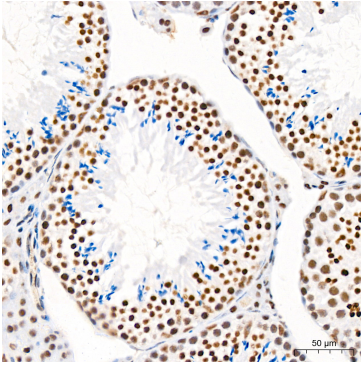


Immunohistochemistry analysis of ATF2 in paraffin-embedded Human lung cancer tissue using ATF2 Rabbit mAb (A22718) at a dilution of 1:500 (40x lens). High pressure antigen retrieval was performed with 0.01 M citrate buffer (pH 6.0) prior to IHC staining.

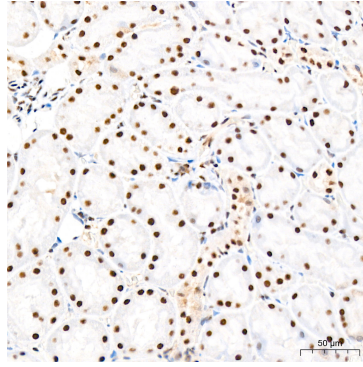


Immunohistochemistry analysis of ATF2 in paraffin-embedded Mouse brain tissue using ATF2 Rabbit mAb (A22718) at a dilution of 1:500 (40x lens). High pressure antigen retrieval was performed with 0.01 M citrate buffer (pH 6.0) prior to IHC staining.

Validation Data



Immunohistochemistry analysis of ATF2 in paraffin-embedded Mouse testis tissue using ATF2 Rabbit mAb (A22718) at a dilution of 1:500 (40x lens). High pressure antigen retrieval was performed with 0.01 M citrate buffer (pH 6.0) prior to IHC staining.



Immunohistochemistry analysis of ATF2 in paraffin-embedded Rat kidney tissue using ATF2 Rabbit mAb (A22718) at a dilution of 1:500 (40x lens). High pressure antigen retrieval was performed with 0.01 M citrate buffer (pH 6.0) prior to IHC staining.