

PKA C-beta (PRKACB) Rabbit mAb

Catalog No.: A22721 **Recombinant**

Basic Information

Observed MW

39-41kDa

Calculated MW

41kDa

Category

Primary antibody

Applications

ELISA, WB, IHC-P, IF/ICC

Cross-Reactivity

Human, Mouse, Rat

CloneNo number

ARC57124

Background

The protein encoded by this gene is a member of the serine/threonine protein kinase family. The encoded protein is a catalytic subunit of cAMP (cyclic AMP)-dependent protein kinase, which mediates signalling through cAMP. cAMP signaling is important to a number of processes, including cell proliferation and differentiation. Multiple alternatively spliced transcript variants encoding distinct isoforms have been observed.

Recommended Dilutions

WB	1:2000 - 1:20000
IHC-P	1:500 - 1:1000
IF/ICC	1:50 - 1:200

Immunogen Information

Gene ID

5567

Swiss Prot

P22694

Immunogen

A synthetic peptide corresponding to a sequence within amino acids 251-351 of human PKA C-beta (PRKACB).

Synonyms

CAFD2; PKA C-beta (PRKACB)

Contact

☎ | 400-999-6126

✉ | cn.market@abclonal.com.cn

🌐 | www.abclonal.com.cn

Product Information

Source

Rabbit

Isotype

IgG

Purification

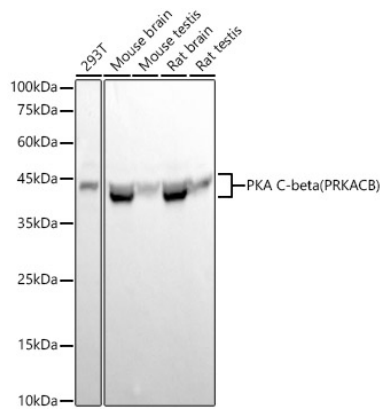
Affinity purification

Storage

Store at -20°C. Avoid freeze / thaw cycles.

Buffer: PBS with 0.05% proclin300, 0.05% BSA, 50% glycerol, pH7.3.

Validation Data



Western blot analysis of various lysates, using PKA C-beta (PRKACB) Rabbit mAb (A22721) at 1:20000 dilution.

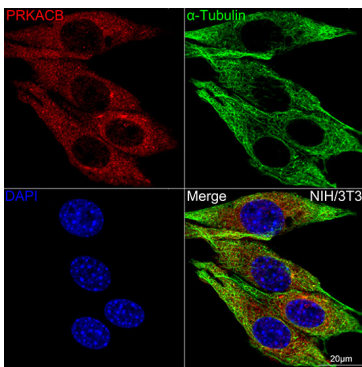
Secondary antibody: HRP Goat Anti-Rabbit IgG (H+L) (AS014) at 1:10000 dilution.

Lysates/proteins: 25µg per lane.

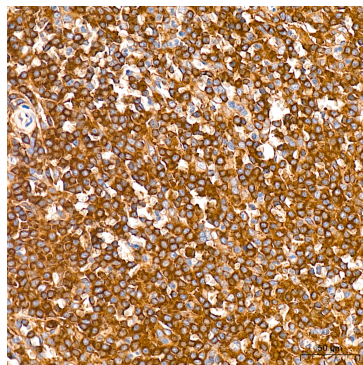
Blocking buffer: 3% nonfat dry milk in TBST.

Detection: ECL Basic Kit (RM00020).

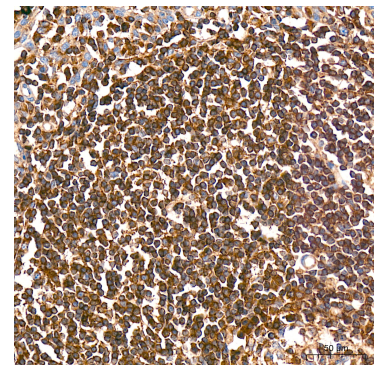
Exposure time: 10s.



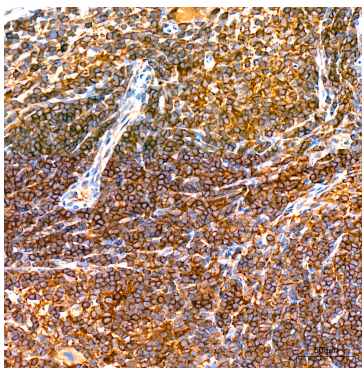
Confocal imaging of NIH-3T3 cells using PKA C-beta (PRKACB) Rabbit mAb (A22721, dilution 1:200) (Red). The cells were counterstained with α -Tubulin Mouse mAb (AC012, dilution 1:400) (Green). DAPI was used for nuclear staining (blue). Objective: 60x.



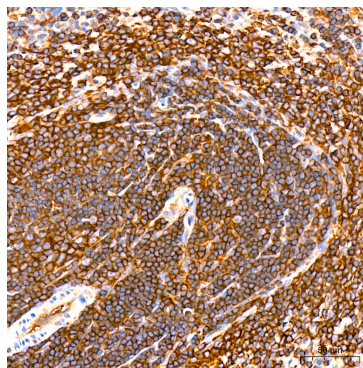
Immunohistochemistry analysis of PKA C-beta (PRKACB) in paraffin-embedded Human spleen tissue using PKA C-beta (PRKACB) Rabbit mAb (A22721) at a dilution of 1:800 (40x lens). High pressure antigen retrieval was performed with 0.01 M citrate buffer (pH 6.0) prior to IHC staining.



Immunohistochemistry analysis of PKA C-beta (PRKACB) in paraffin-embedded Human tonsil tissue using PKA C-beta (PRKACB) Rabbit mAb (A22721) at a dilution of 1:800 (40x lens). High pressure antigen retrieval was performed with 0.01 M citrate buffer (pH 6.0) prior to IHC staining.



Immunohistochemistry analysis of PKA C-beta (PRKACB) in paraffin-embedded Mouse spleen tissue using PKA C-beta (PRKACB) Rabbit mAb (A22721) at a dilution of 1:800 (40x lens). High pressure antigen retrieval was performed with 0.01 M citrate buffer (pH 6.0) prior to IHC staining.



Immunohistochemistry analysis of PKA C-beta (PRKACB) in paraffin-embedded Rat spleen tissue using PKA C-beta (PRKACB) Rabbit mAb (A22721) at a dilution of 1:800 (40x lens). High pressure antigen retrieval was performed with 0.01 M citrate buffer (pH 6.0) prior to IHC staining.