

TRPC6 Rabbit mAb

Catalog No.: A22722 **Recombinant**

Basic Information

Observed MW

106kDa

Calculated MW

106kDa

Category

Primary antibody

Applications

ELISA, WB

Cross-Reactivity

Human

CloneNo number

ARC55999

Background

The protein encoded by this gene forms a receptor-activated calcium channel in the cell membrane. The channel is activated by diacylglycerol and is thought to be under the control of a phosphatidylinositol second messenger system. Activation of this channel occurs independently of protein kinase C and is not triggered by low levels of intracellular calcium. Defects in this gene are a cause of focal segmental glomerulosclerosis 2 (FSGS2).

Recommended Dilutions

WB 1:1000 - 1:5000

Immunogen Information

Gene ID

7225

Swiss Prot

Q9Y210

Immunogen

Recombinant fusion protein containing a sequence corresponding to amino acids 500-600 of human TRPC6. (NP_004612.2).

Synonyms

TRP6; FSGS2; TRPC6

Contact

☎ | 400-999-6126

✉ | cn.market@abclonal.com.cn

🌐 | www.abclonal.com.cn

Product Information

Source

Rabbit

Isotype

IgG

Purification

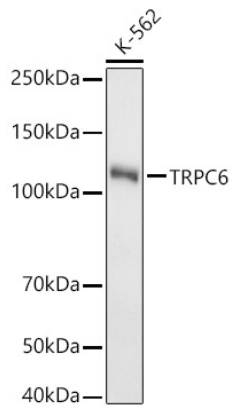
Affinity purification

Storage

Store at -20°C. Avoid freeze / thaw cycles.

Buffer: PBS with 0.05% proclin300, 0.05% BSA, 50% glycerol, pH7.3.

Validation Data



Western blot analysis of lysates from K-562 cells, using TRPC6 Rabbit mAb (A22722) at 1:2000 dilution.
Secondary antibody: HRP Goat Anti-Rabbit IgG (H+L) (AS014) at 1:10000 dilution.
Lysates/proteins: 25µg per lane.
Blocking buffer: 3% nonfat dry milk in TBST.
Detection: ECL Basic Kit (RM00020).
Exposure time: 180s.