

TWF2 Rabbit mAb

Catalog No.: A22727 **Recombinant**

Basic Information

Observed MW

40 kDa

Calculated MW

40 kDa

Category

Primary antibody

Applications

WB, IP, ELISA

Cross-Reactivity

Human, Mouse, Rat

CloneNo number

ARC54193

Background

The protein encoded by this gene was identified by its interaction with the catalytic domain of protein kinase C-zeta. The encoded protein contains an actin-binding site and an ATP-binding site. It is most closely related to twinfilin (PTK9), a conserved actin monomer-binding protein.

Recommended Dilutions

WB 1:4000 - 1:20000

IP 0.5µg-4µg antibody for
200µg-400µg extracts of
whole cells

ELISA Recommended starting
concentration is 1 µg/mL.
Please optimize the
concentration based on
your specific assay
requirements.

Immunogen Information

Gene ID

11344

Swiss Prot

Q6IBS0

Immunogen

Recombinant protein (or fragment). This information is considered to be commercially sensitive.

Synonyms

A6r; A6RP; PTK9L; MSTP011; TWF2

Contact

☎ | 400-999-6126

✉ | cn.market@abclonal.com.cn

🌐 | www.abclonal.com.cn

Product Information

Source

Rabbit

Isotype

IgG

Purification

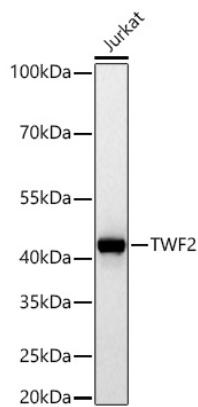
Affinity purification

Storage

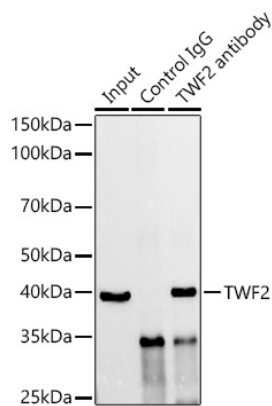
Store at -20°C. Avoid freeze / thaw cycles.

Buffer: PBS containing 50% glycerol and 0.05% BSA, preserved with proclin300 or sodium azide (as specified on the Certificate of Analysis), pH 7.3.

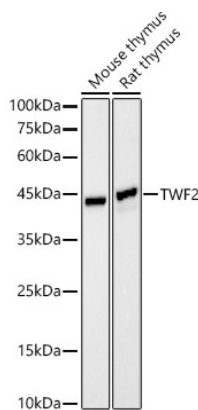
Validation Data



Western blot analysis of lysates from Jurkat cells using TWF2 Rabbit mAb (A22727) at 1:8000 dilution incubated overnight at 4°C.
Secondary antibody: HRP-conjugated Goat anti-Rabbit IgG (H+L) (AS014) at 1:10000 dilution.
Lysates/proteins: 25 µg per lane.
Blocking buffer: 3% nonfat dry milk in TBST.
Detection: ECL Basic Kit (RM00020).
Exposure time: 20 s.



Immunoprecipitation analysis of 300 µg extracts of Jurkat cells using 3 µg TWF2 Rabbit mAb(A22727).
Western blot was performed from the immunoprecipitate using TWF2 Rabbit mAb(A22727) at a dilution of 1:10000.



Western blot analysis of various lysates using TWF2 Rabbit mAb (A22727) at 1:20000 dilution incubated overnight at 4°C.
Secondary antibody: HRP-conjugated Goat anti-Rabbit IgG (H+L) (AS014) at 1:10000 dilution.
Lysates/proteins: 25 µg per lane.
Blocking buffer: 3% nonfat dry milk in TBST.
Detection: ECL Basic Kit (RM00020).
Exposure time: 180 s.