

FceR1 alpha Rabbit mAb

Catalog No.: A22729 **Recombinant**

Basic Information

Observed MW

45-70kDa

Calculated MW

30kDa

Category

Primary antibody

Applications

ELISA, WB

Cross-Reactivity

Human, Mouse, Rat

CloneNo number

ARC58693

Background

The immunoglobulin epsilon receptor (IgE receptor) is the initiator of the allergic response. When two or more high-affinity IgE receptors are brought together by allergen-bound IgE molecules, mediators such as histamine that are responsible for allergy symptoms are released. This receptor is comprised of an alpha subunit, a beta subunit, and two gamma subunits. The protein encoded by this gene represents the alpha subunit.

Recommended Dilutions

WB 1:1000 - 1:7000

Immunogen Information

Gene ID

2205

Swiss Prot

P12319

Immunogen

Recombinant fusion protein containing a sequence corresponding to amino acids 26-205 of human FceR1 alpha. (NP_001992.1).

Synonyms

FCE1A; FcERI; FCERIA; FceR1 alpha

Contact

☎ | 400-999-6126

✉ | cn.market@abclonal.com.cn

🌐 | www.abclonal.com.cn

Product Information

Source

Rabbit

Isotype

IgG

Purification

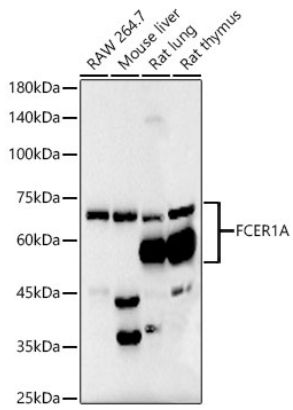
Affinity purification

Storage

Store at -20°C. Avoid freeze / thaw cycles.

Buffer: PBS with 0.05% proclin300, 0.05% BSA, 50% glycerol, pH7.3.

Validation Data



Western blot analysis of various lysates, using FcER1 alpha Rabbit mAb (A22729) at 1:6000 dilution.
Secondary antibody: HRP Goat Anti-Rabbit IgG (H+L) (AS014) at 1:10000 dilution.
Lysates/proteins: 25µg per lane.
Blocking buffer: 3% nonfat dry milk in TBST.
Detection: ECL Basic Kit (RM00020).
Exposure time: 90s.