

IFN-beta Rabbit mAb

Catalog No.: A22740 **Recombinant** **2 Publications**

Basic Information

Observed MW

63kDa (C-hFc&His tagged Active Recombinant Mouse IFN-beta Protein) □ 24kDa/26kDa (Endogenous)

Calculated MW

22kDa

Category

Primary antibody

Applications

WB, ELISA

Cross-Reactivity

Mouse

CloneNo number

ARC58590

Recommended Dilutions

WB 1:2000 - 1:7000

ELISA Recommended starting concentration is 1 µg/mL. Please optimize the concentration based on your specific assay requirements.

Background

Enables cytokine activity and type I interferon receptor binding activity. Involved in B cell proliferation; cellular response to virus; and type I interferon signaling pathway. Acts upstream of or within several processes, including cellular response to organic cyclic compound; defense response to other organism; and negative regulation of osteoclast differentiation. Located in extracellular space. Is expressed in embryo and liver. Human ortholog(s) of this gene implicated in COVID-19. Orthologous to human IFNB1 (interferon beta 1).

Immunogen Information

Gene ID

15977

Swiss Prot

P01575

Immunogen

Recombinant fusion protein containing a sequence corresponding to amino acids 1-182 of mouse IFN-beta (NP_034640.1)

Synonyms

Ifb; IFNB; If1da1; IFN-beta

Contact

☎ | 400-999-6126

✉ | cn.market@abclonal.com.cn

🌐 | www.abclonal.com.cn

Product Information

Source

Rabbit

Isotype

IgG

Purification

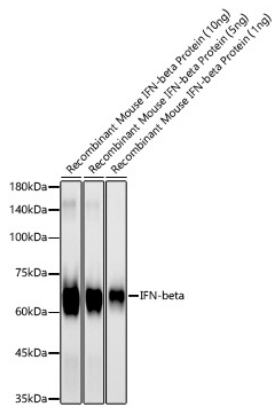
Affinity purification

Storage

Store at -20°C. Avoid freeze / thaw cycles.

Buffer: PBS with 0.05% proclin300, 0.05% BSA, 50% glycerol, pH7.3.

Validation Data



Western blot analysis of Recombinant Mouse IFN-beta Protein (RP01076) using IFN-beta Rabbit mAb (A22740) at 1:6000 dilution.

Secondary antibody: HRP-conjugated Goat anti-Rabbit IgG (H+L) (AS014) at 1:10000 dilution.

Lysates/proteins: 10ng/5ng/1ng per lane.

Blocking buffer: 3% nonfat dry milk in TBST.

Detection: ECL Basic Kit (RM00020).

Exposure time: 30s.