

[KD Validated] RAB10 Rabbit mAb

Catalog No.: A22746 **Recombinant**

Basic Information

Observed MW

23kDa

Calculated MW

23kDa

Category

Primary antibody

Applications

ELISA,WB,IF/ICC

Cross-Reactivity

Human, Mouse, Rat

CloneNo number

ARC55653

Background

RAB10 belongs to the RAS (see HRAS; MIM 190020) superfamily of small GTPases. RAB proteins localize to exocytic and endocytic compartments and regulate intracellular vesicle trafficking (Bao et al., 1998 [PubMed 9918381]).

Recommended Dilutions

WB	1:10000 - 1:70000
IF/ICC	1:50 - 1:200

Immunogen Information

Gene ID

10890

Swiss Prot

P61026

Immunogen

A synthetic peptide corresponding to a sequence within amino acids 101-200 of human RAB10 (NP_057215.3).

Synonyms

RAB10; ras-related protein Rab-10; [KD Validated] RAB10

Contact

	400-999-6126
	cn.market@abclonal.com.cn
	www.abclonal.com.cn

Product Information

Source

Rabbit

Isotype

IgG

Purification

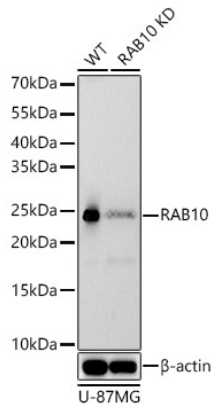
Affinity purification

Storage

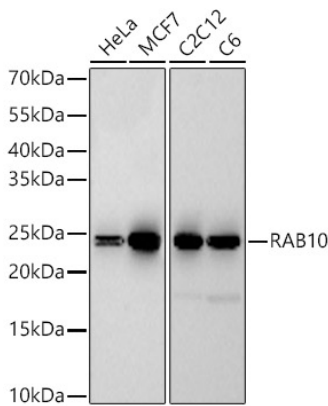
Store at -20°C. Avoid freeze / thaw cycles.

Buffer: PBS with 0.05% proclin300,0.05% BSA,50% glycerol,pH7.3.

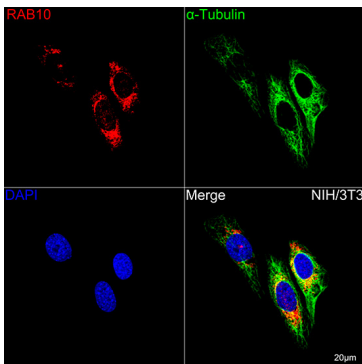
Validation Data



Western blot analysis of lysates from wild type (WT) and RAB10 knockdown (KD) U-87MG cells, using [KD Validated] RAB10 Rabbit mAb (A22746) at 1:60000 dilution.
Secondary antibody: HRP Goat Anti-Rabbit IgG (H+L) (AS014) at 1:10000 dilution.
Lysates/proteins: 25µg per lane.
Blocking buffer: 3% nonfat dry milk in TBST.
Detection: ECL Basic Kit (RM00020).
Exposure time: 180s.



Western blot analysis of various lysates, using [KD Validated] RAB10 Rabbit mAb (A22746) at 1:60000 dilution.
Secondary antibody: HRP Goat Anti-Rabbit IgG (H+L) (AS014) at 1:10000 dilution.
Lysates/proteins: 25µg per lane.
Blocking buffer: 3% nonfat dry milk in TBST.
Detection: ECL Basic Kit (RM00020).
Exposure time: 180s.



Confocal imaging of NIH/3T3 cells using [KD Validated] RAB10 Rabbit mAb (A22746, dilution 1:200) followed by a further incubation with Cy3 Goat Anti-Rabbit IgG (H+L) (AS007, dilution 1:500) (Red). The cells were counterstained with alpha-Tubulin Mouse mAb (AC012, dilution 1:400) followed by incubation with ABflo® 488-conjugated Goat Anti-Mouse IgG (H+L) Ab (AS076, dilution 1:500) (Green). DAPI was used for nuclear staining (Blue). Objective: 100x.