

FAM20A Rabbit mAb

Catalog No.: A22760 **Recombinant**

Basic Information

Observed MW

59kDa

Calculated MW

61kDa

Category

Primary antibody

Applications

ELISA, WB

Cross-Reactivity

Human

CloneNo number

ARC58698

Background

This locus encodes a protein that is likely secreted and may function in hematopoiesis. A mutation at this locus has been associated with amelogenesis imperfecta and gingival hyperplasia syndrome. Alternatively spliced transcript variants have been identified.

Recommended Dilutions

WB 1:2000 - 1:20000

Immunogen Information

Gene ID

54757

Swiss Prot

Q96MK3

Immunogen

A synthetic peptide corresponding to a sequence within amino acids 500-600 of human FAM20A(NP_060035.2).

Synonyms

AI1G; AIGFS; FP2747; FAM20A

Contact

 | 400-999-6126

 | cn.market@abclonal.com.cn

 | www.abclonal.com.cn

Product Information

Source

Rabbit

Isotype

IgG

Purification

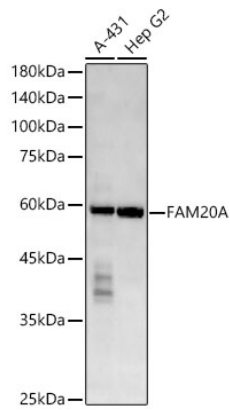
Affinity purification

Storage

Store at -20°C. Avoid freeze / thaw cycles.

Buffer: PBS with 0.05% proclin300, 0.05% BSA, 50% glycerol, pH7.3.

Validation Data



Western blot analysis of various lysates, using FAM20A antibody (A22760) at 1:20000 dilution.
Secondary antibody: HRP Goat Anti-Rabbit IgG (H+L) (AS014) at 1:10000 dilution.
Lysates/proteins: 25µg per lane.
Blocking buffer: 3% nonfat dry milk in TBST.
Detection: ECL Enhanced Kit (RM00021).
Exposure time: 180s.