

# IL-1 alpha Rabbit mAb

Catalog No.: A22766 **Recombinant**

## Basic Information

### Observed MW

20-25kDa

### Calculated MW

31kDa

### Category

Primary antibody

### Applications

ELISA,WB

### Cross-Reactivity

Mouse

### CloneNo number

ARC58205

## Background

Enables cytokine activity and interleukin-1 receptor binding activity. Involved in positive regulation of angiogenesis and positive regulation of vascular endothelial growth factor production. Acts upstream of or within several processes, including cell surface receptor signaling pathway; connective tissue replacement involved in inflammatory response wound healing; and positive regulation of cytokine production. Located in cytoplasm and extracellular space. Is expressed in several structures, including alimentary system; brain; hemolymphoid system gland; reproductive system; and respiratory system. Human ortholog(s) of this gene implicated in several diseases, including Fabry disease; Schnitzler syndrome; autoimmune disease (multiple); hematologic cancer (multiple); and lung disease (multiple). Orthologous to human IL1A (interleukin 1 alpha).

## Recommended Dilutions

**WB** 1:2000 - 1:10000

## Immunogen Information

### Gene ID

16175

### Swiss Prot

P01582

### Immunogen

Recombinant fusion protein containing a sequence corresponding to amino acids 115-270 of mouse IL-1 alpha (NP\_034684.2).

### Synonyms

Il-1a; IL-1 alpha

## Contact

☎ | 400-999-6126

✉ | [cn.market@abclonal.com.cn](mailto:cn.market@abclonal.com.cn)

🌐 | [www.abclonal.com.cn](http://www.abclonal.com.cn)

## Product Information

### Source

Rabbit

### Isotype

IgG

### Purification

Affinity purification

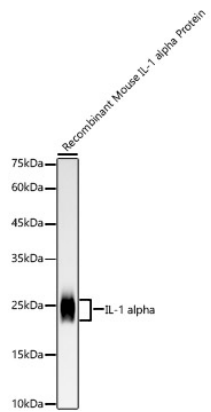
### Storage

Store at -20°C. Avoid freeze / thaw cycles.

Buffer: PBS with 0.05% proclin300,0.05% BSA,50% glycerol,pH7.3.

## Validation Data

---



Western blot analysis of recombinant Mouse IL-1 alpha Protein, using IL-1 alpha Rabbit mAb (A22766) at 1:10000 dilution.

Secondary antibody: HRP Goat Anti-Rabbit IgG (H+L) (AS014) at 1:10000 dilution.

Lysates/proteins: 10ng per lane.

Blocking buffer: 3% nonfat dry milk in TBST.

Detection: ECL Basic Kit (RM00020).

Exposure time: 180s.