

ABflo® 647 Rabbit anti-Human/Mouse Integrin alpha 5 (ITGA5/CD49e) mAb

Catalog No.: A22772

Basic Information

Observed MW

Calculated MW

115kDa

Category

Primary antibody

Applications

FC

Cross-Reactivity

Human, Mouse

CloneNo number

ARC58294-ABf647

Conjugate

ABflo® 647. Ex:648nm. Em:664nm.

Recommended Dilutions

FC 5 µl per 10⁶ cells in
100 µl volume

Background

The product of this gene belongs to the integrin alpha chain family. Integrins are heterodimeric integral membrane proteins composed of an alpha subunit and a beta subunit that function in cell surface adhesion and signaling. The encoded preproprotein is proteolytically processed to generate light and heavy chains that comprise the alpha 5 subunit. This subunit associates with the beta 1 subunit to form a fibronectin receptor. This integrin may promote tumor invasion, and higher expression of this gene may be correlated with shorter survival time in lung cancer patients. Note that the integrin alpha 5 and integrin alpha V subunits are encoded by distinct genes.

Immunogen Information

Gene ID

3678

Swiss Prot

P08648

Immunogen

Recombinant fusion protein containing a sequence corresponding to amino acids 42-995 of human Integrin alpha 5 (ITGA5/CD49e)(NP_002196.4)

Synonyms

FNRA; CD49e; VLA-5; VLA5A

Contact

☎ | 400-999-6126

✉ | cn.market@abclonal.com.cn

🌐 | www.abclonal.com.cn

Product Information

Source

Rabbit

Isotype

IgG

Purification

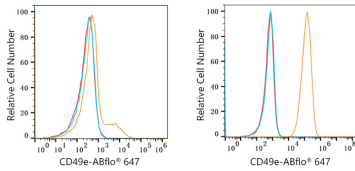
Affinity purification

Storage

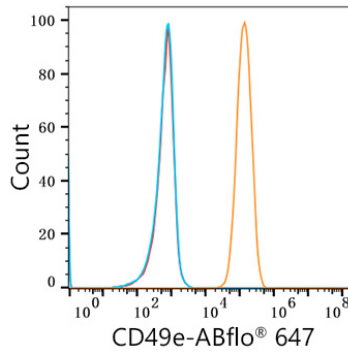
Store at 2-8°C. Avoid freeze.

Buffer: PBS with 0.03% proclin300,0.2% BSA,pH7.3.

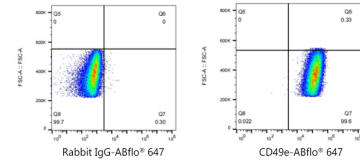
Validation Data



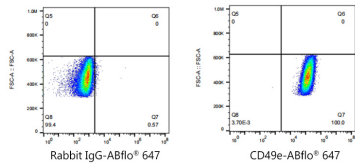
Flow cytometry: 1×10^6 SH-SY5Y cells (negative control, Left) and U-87MG cells (Right) were surface-stained with ABflo® 647 Rabbit anti-Human/Mouse Integrin alpha 5 (ITGA5/CD49e) mAb (A22772, 5 µl/Test, orange line) or ABflo® 647 Rabbit IgG isotype control (A22070, 5 µl/Test, blue line). Non-fluorescently stained cells were used as blank control (red line).



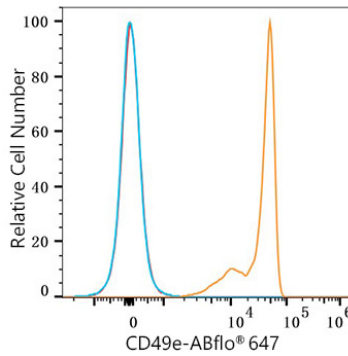
Flow cytometry: 1×10^6 NIH/3T3 cells were surface-stained with ABflo® 647 Rabbit anti-Human/Mouse Integrin alpha 5 (ITGA5/CD49e) mAb (A22772, 5 µl/Test, orange line) or ABflo® 647 Rabbit IgG isotype control (A22070, 5 µl/Test, blue line). Non-fluorescently stained NIH/3T3 cells were used as blank control (red line).



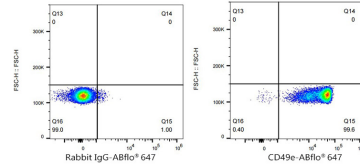
Flow cytometry: 1×10^6 U-87MG cells were surface-stained with ABflo® 647 Rabbit IgG isotype control (A22070, 5 µl/Test, left) or ABflo® 647 Rabbit anti-Human/Mouse Integrin alpha 5 (ITGA5/CD49e) mAb (A22772, 5 µl/Test, right).



Flow cytometry: 1×10^6 NIH/3T3 cells were surface-stained with ABflo® 647 Rabbit IgG isotype control (A22070, 5 µl/Test, left) or ABflo® 647 Rabbit anti-Human/Mouse Integrin alpha 5 (ITGA5/CD49e) mAb (A22772, 5 µl/Test, right).



Flow cytometry: 1×10^6 Human PBMC were surface-stained with ABflo® 647 Rabbit anti-Human Integrin alpha 5 (ITGA5/CD49e) mAb (A22772, 5 µl/Test, orange line) or ABflo® 647 Rabbit IgG isotype control (A22070, 5 µl/Test, blue line). Non-fluorescently stained cells were used as blank control (red line).



Flow cytometry: 1×10^6 Human PBMC were surface-stained with ABflo® 647 Rabbit IgG isotype control (A22070, 5 µl/Test, left) or ABflo® 647 Rabbit anti-Human Integrin alpha 5 (ITGA5/CD49e) mAb (A22772, 5 µl/Test, right).