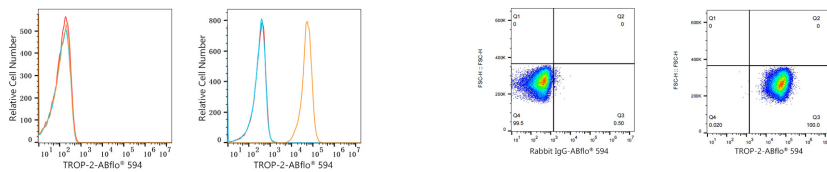


Validation Data



Flow cytometry: 1×10^6 Jurkat cells (negative control, left) and A-431 cells (right) were surface-stained with Goat anti-Human TROP-2 mAb(IgG, κ , orange line) or ABflo® 594 Rabbit IgG isotype control (A23821,5 μ l/Test, blue line), followed by ABflo® 594 Rabbit anti-Goat IgG (Fc) fragment mAb(A22778, 5 μ l/Test) staining. Non-fluorescently stained cells were used as blank control (red line).

Flow cytometry: 1×10^6 A-431 cells were surface-stained with ABflo® 594 Rabbit IgG isotype control (A23821,5 μ l/Test, left) or Goat anti-Human TROP-2 mAb(IgG, κ , right). ABflo® 594 Rabbit anti-Goat IgG (Fc) fragment mAb(A22778, 5 μ l/Test) was used as a secondary antibody.