

ABflo® 647 Rabbit anti-Mouse CD366 (TIM-3) mAb

Catalog No.: A22779

Basic Information

Observed MW

Calculated MW

22kDa/31kDa

Category

Primary antibody

Applications

FC

Cross-Reactivity

Mouse

CloneNo number

ARC59425-ABf647

Conjugate

ABflo® 647. Ex:648nm. Em:664nm.

Recommended Dilutions

FC 5 µl per 10⁶ cells in
100 µl volume

Background

Predicted to enable metal ion binding activity. Involved in several processes, including regulation of cytokine production; regulation of leukocyte activation; and toll-like receptor signaling pathway. Located in cell surface; early endosome; and immunological synapse. Is expressed in several structures, including dorsal aorta; gut; liver; lung; and reproductive system. Human ortholog(s) of this gene implicated in hepatocellular carcinoma and renal cell carcinoma. Orthologous to human HAVCR2 (hepatitis A virus cellular receptor 2).

Immunogen Information

Gene ID

171285

Swiss Prot

Q8VIM0

Immunogen

Recombinant fusion protein containing a sequence corresponding to amino acids 20-191 of mouse CD366 (TIM-3)(NP_599011.2)

Synonyms

Tim3; TIM-3; Timd3

Contact

☎ | 400-999-6126

✉ | cn.market@abclonal.com.cn

🌐 | www.abclonal.com.cn

Product Information

Source

Rabbit

Isotype

IgG

Purification

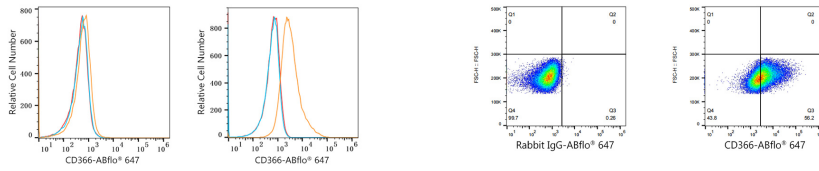
Affinity purification

Storage

Store at 2-8°C. Avoid freeze.

Buffer: PBS with 0.03% proclin300,0.2% BSA,pH7.3.

Validation Data



Flow cytometry: 1×10^6 MCF-7 cells (negative control, Left) and Raw 264.7 cells (Right) were surface-stained with ABflo® 647 Rabbit anti-Mouse CD366 (TIM-3) mAb (A22779, 5 μ l/Test, orange line) or ABflo® 647 Rabbit IgG isotype control (A22070, 5 μ l/Test, blue line). Non-fluorescently stained cells were used as blank control (red line).

Flow cytometry: 1×10^6 RAW 264.7 cells were surface-stained with ABflo® 647 Rabbit IgG isotype control (A22070, 5 μ l/Test, left) or ABflo® 647 Rabbit anti-Mouse CD366 (TIM-3) mAb (A22779, 5 μ l/Test, right).