

SMURF2 Rabbit mAb

Catalog No.: A2278

Recombinant

6 Publications

Basic Information

Observed MW

80kDa

Calculated MW

86kDa

Category

Primary antibody

Applications

WB,IHC-P,IF/ICC,IP,ELISA

Cross-Reactivity

Human, Mouse

CloneNo number

ARC1897

Background

Enables SMAD binding activity; identical protein binding activity; and ubiquitin-protein transferase activity. Involved in negative regulation of transforming growth factor beta receptor signaling pathway; positive regulation of trophoblast cell migration; and ubiquitin-dependent SMAD protein catabolic process. Located in nuclear speck. Part of ubiquitin ligase complex.

Recommended Dilutions

WB 1:500 - 1:2000

IHC-P 1:200 - 1:800

IF/ICC 1:50 - 1:200

IP 0.5µg-4µg antibody for 400µg-600µg extracts of whole cells

ELISA Recommended starting concentration is 1 µg/mL. Please optimize the concentration based on your specific assay requirements.

Immunogen Information

Gene ID

64750

Swiss Prot

Q9HAU4

Immunogen

Recombinant fusion protein containing a sequence corresponding to amino acids 201-290 of human SMURF2 (Q9HAU4).

Synonyms

SMURF2; E3 ubiquitin-protein ligase SMURF2

Product Information

Source

Rabbit

Isotype

IgG

Purification

Affinity purification

Storage

Store at -20°C. Avoid freeze / thaw cycles.

Buffer: PBS with 0.02% sodium azide,0.05% BSA,50% glycerol,pH7.3.

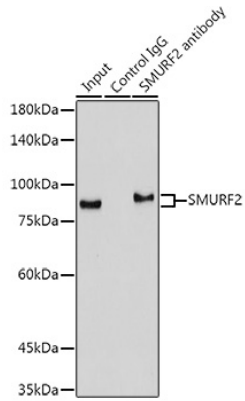
Contact

☎ | 400-999-6126

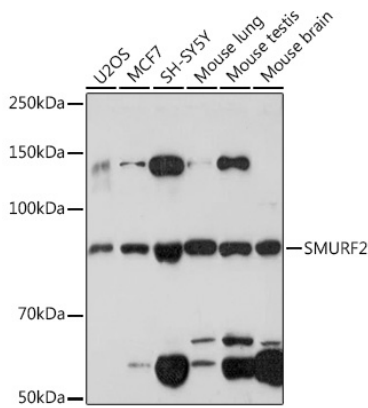
✉ | cn.market@abclonal.com.cn

🌐 | www.abclonal.com.cn

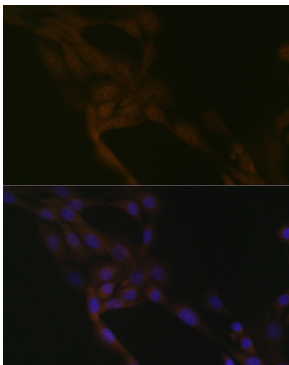
Validation Data



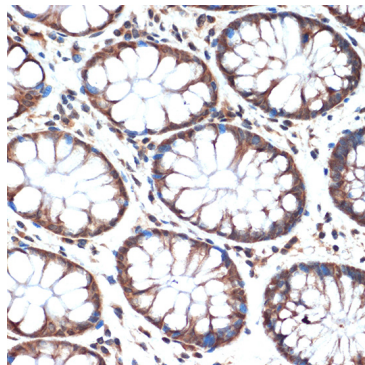
Immunoprecipitation analysis of 300 µg extracts of Mouse lung using 3 µg SMURF2 antibody (A2278). Western blot was performed from the immunoprecipitate using SMURF2 antibody (A2278) at a dilution of 1:1000.



Western blot analysis of various lysates using SMURF2 Rabbit mAb (A2278) at 1:1000 dilution. Secondary antibody: HRP-conjugated Goat anti-Rabbit IgG (H+L) (AS014) at 1:10000 dilution. Lysates/proteins: 25µg per lane. Blocking buffer: 3% nonfat dry milk in TBST. Detection: ECL Enhanced Kit (RM00021). Exposure time: 3min.



Immunofluorescence analysis of NIH-3T3 cells using SMURF2 Rabbit mAb (A2278) at dilution of 1:100 (40x lens). Secondary antibody: Cy3-conjugated Goat anti-Rabbit IgG (H+L) (AS007) at 1:500 dilution. Blue: DAPI for nuclear staining.



Immunohistochemistry analysis of paraffin-embedded Human colon using SMURF2 Rabbit mAb (A2278) at dilution of 1:100 (40x lens). Microwave antigen retrieval performed with 0.01M Tris/EDTA Buffer (pH 9.0) prior to IHC staining.