

# ABflo® 647 Rabbit anti-Mouse Ly-6A/E (Sca-1) mAb

Catalog No.: A22787

## Basic Information

### Observed MW

Refer to figures

### Calculated MW

114kDa

### Category

Primary antibody

### Applications

FC

### Cross-Reactivity

Mouse

### CloneNo number

ARC57786-ABf647

### Conjugate

ABflo® 647. Ex:648nm. Em:664nm.

## Recommended Dilutions

FC 5 µl per 10<sup>6</sup> cells in  
100 µl volume

## Background

Predicted to enable acetylcholine receptor binding activity and acetylcholine receptor inhibitor activity. Acts upstream of or within response to bacterium. Located in external side of plasma membrane. Is expressed in alimentary system; hindlimb tendon; liver; metanephros; and physiological umbilical hernia. Used to study osteoporosis. Orthologous to human LY6H (lymphocyte antigen 6 family member H).

## Immunogen Information

### Gene ID

110454

### Swiss Prot

P08648

### Immunogen

Recombinant fusion protein containing a sequence corresponding to amino acids 27-111 of Mouse Ly-6A/E (Sca-1)(NP\_034868.1)

### Synonyms

TAP; Sca1; Sca-1; Ly-6A.2; Ly-6A/E; Ly-6E.1

## Contact

☎ | 400-999-6126

✉ | [cn.market@abclonal.com.cn](mailto:cn.market@abclonal.com.cn)

🌐 | [www.abclonal.com.cn](http://www.abclonal.com.cn)

## Product Information

### Source

Rabbit

### Isotype

IgG

### Purification

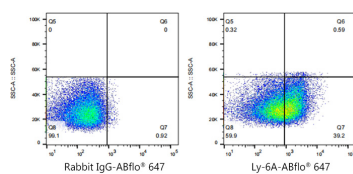
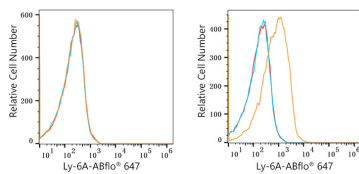
Affinity purification

### Storage

Store at 2-8°C. Avoid freeze.

Buffer: PBS with 0.03% proclin300,0.2% BSA,pH7.3.

## Validation Data



Flow cytometry:  $1 \times 10^6$  RAW 264.7 cells (negative control, Left) and C57BL/6 mouse splenocytes (Right) were surface-stained with ABflo® 647 Rabbit anti-Mouse Ly-6A/E (Sca-1) mAb (A22787, 5  $\mu$ l/Test, orange line) or ABflo® 647 Rabbit IgG isotype control (A22070, 5  $\mu$ l/Test, blue line). Non-fluorescently stained cells were used as blank control (red line).

Flow cytometry:  $1 \times 10^6$  C57BL/6 mouse splenocytes were surface-stained with ABflo® 647 Rabbit IgG isotype control (A22070, 5  $\mu$ l/Test, left) or ABflo® 647 Rabbit anti-Mouse Ly-6A/E (Sca-1) mAb (A22787, 5  $\mu$ l/Test, right).